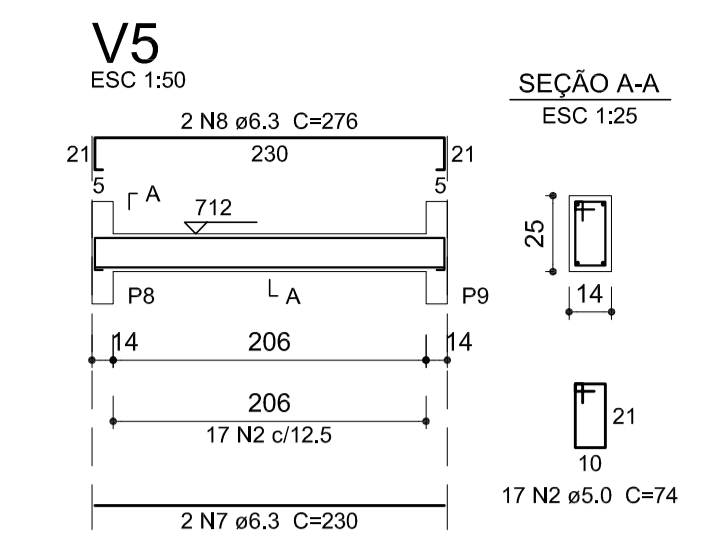
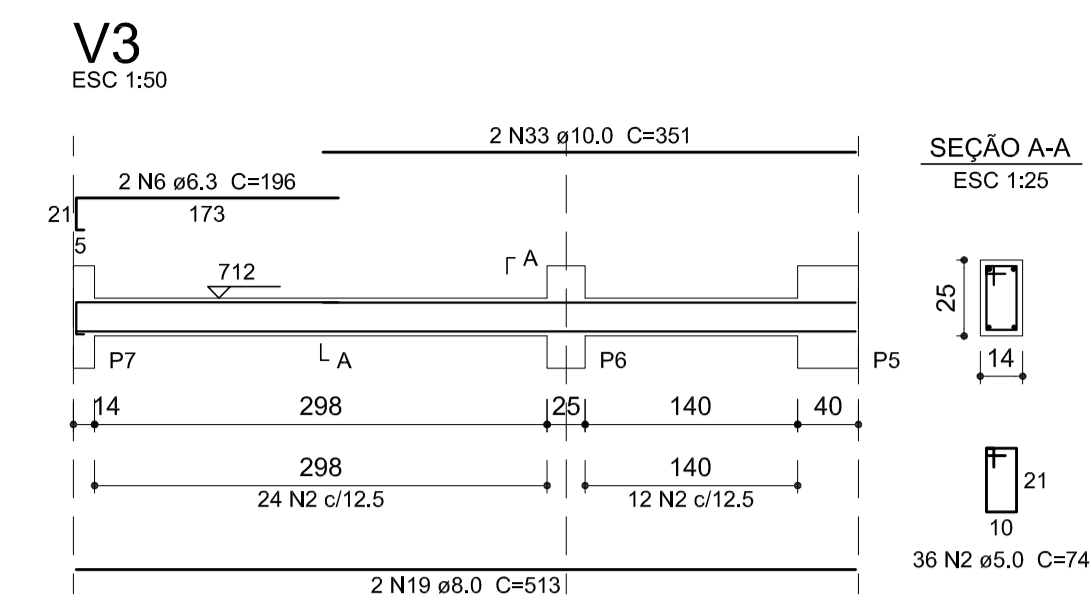
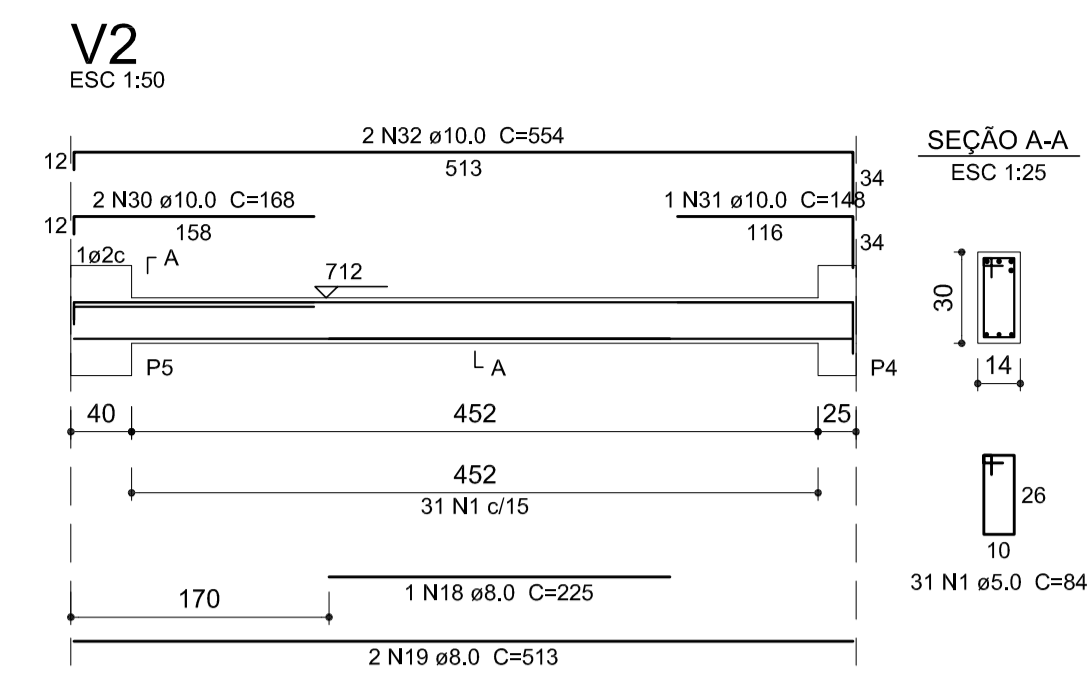
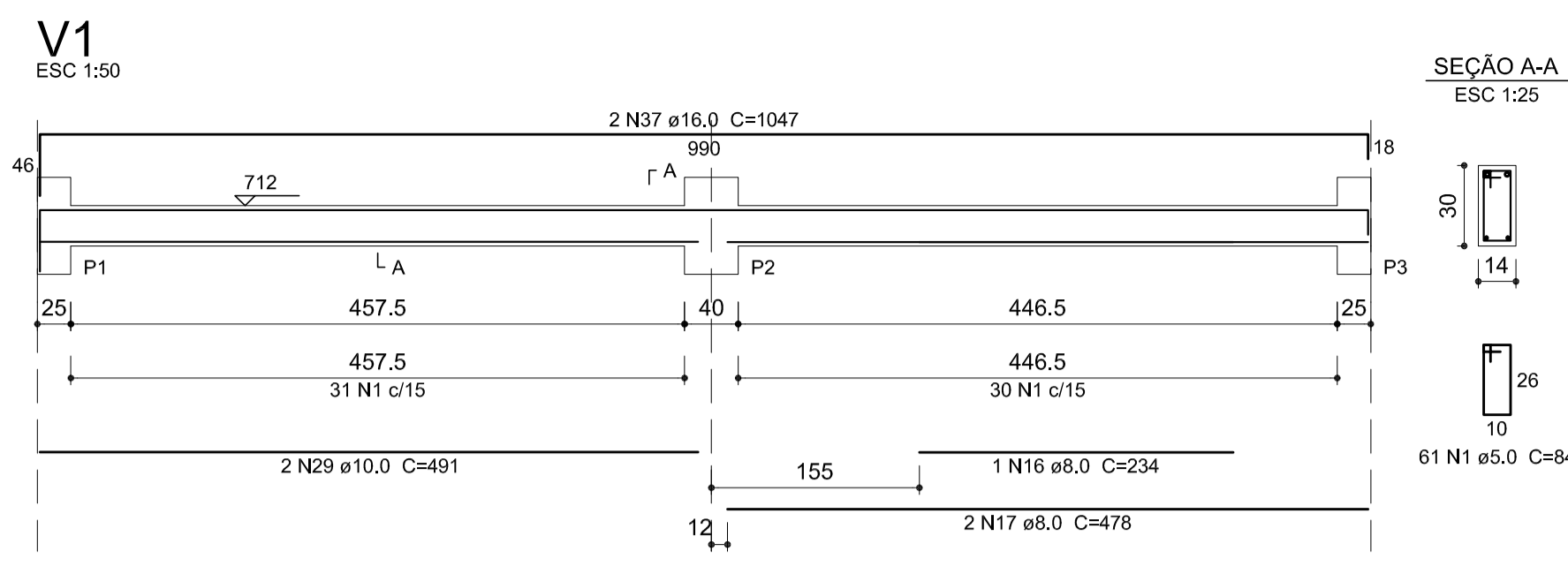
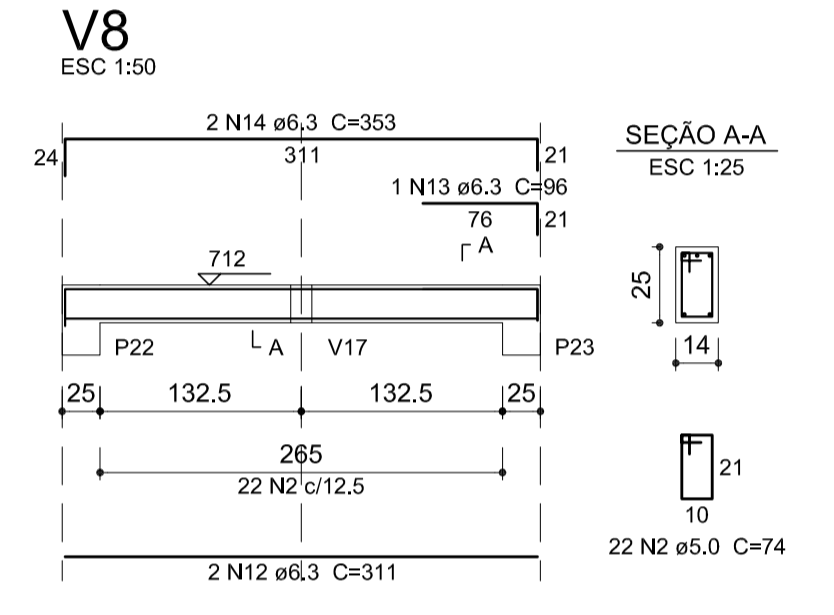
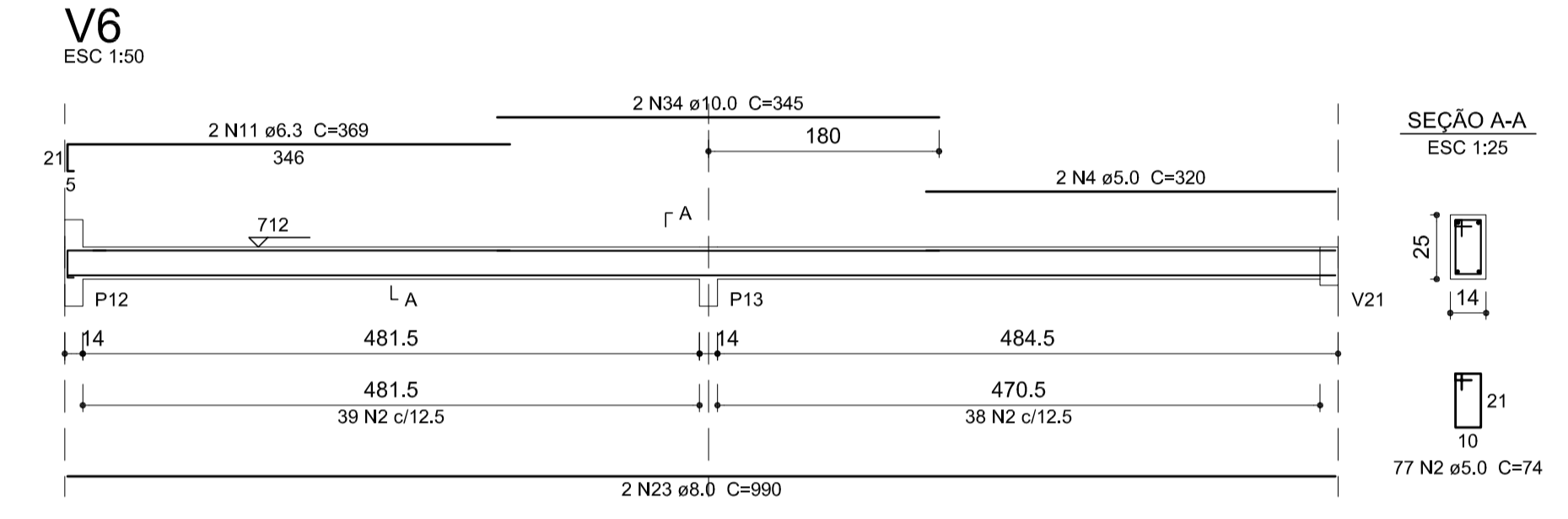
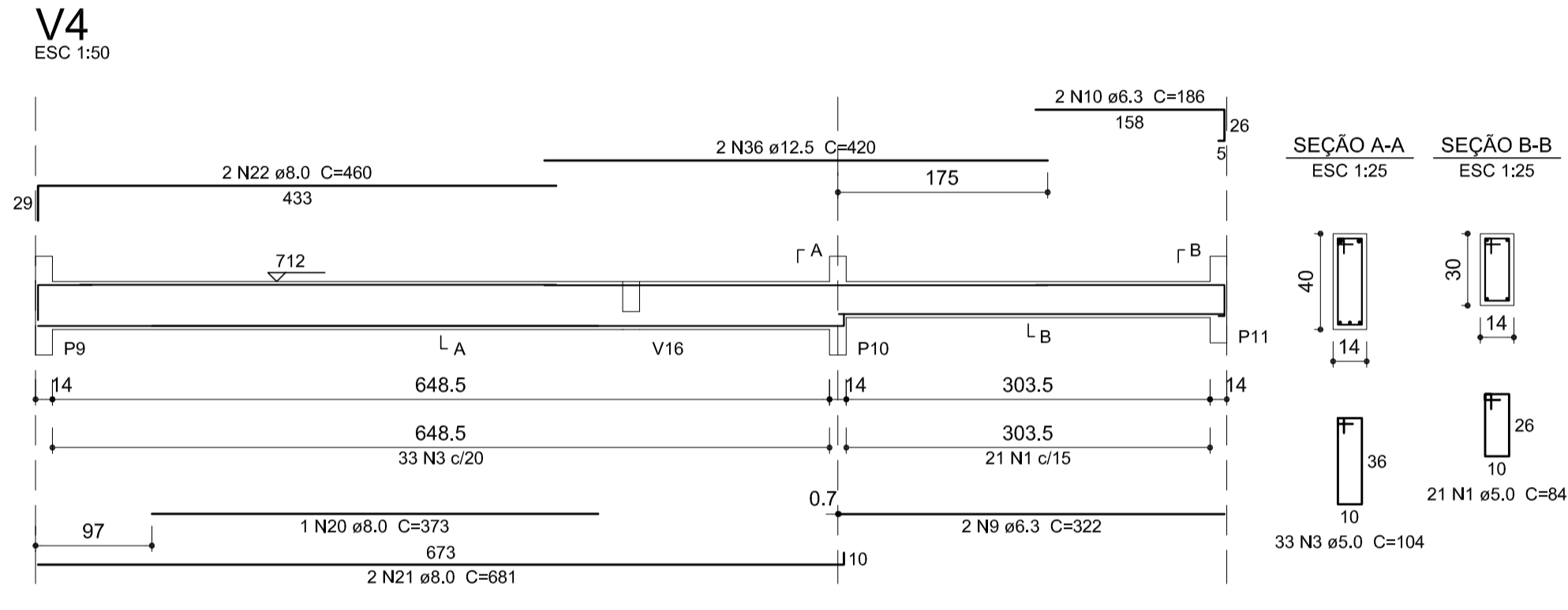


CONFIGURAÇÃO DE PENAS EM PRETO
 COR DE PLOTAR NA MESMA COR
 COR 70% DA COR
 0.0 0.1 0.2 0.3 0.4 0.5 0.6 0.7 0.8 0.9 1.0 1.1 1.2 1.3 1.4 1.5 1.6 1.7 1.8 1.9 2.0 2.1 2.2 2.3 2.4 2.5 2.6 2.7 2.8 2.9 3.0 3.1 3.2 3.3 3.4 3.5 3.6 3.7 3.8 3.9 4.0 4.1 4.2 4.3 4.4 4.5 4.6 4.7 4.8 4.9 5.0



Relação do aço

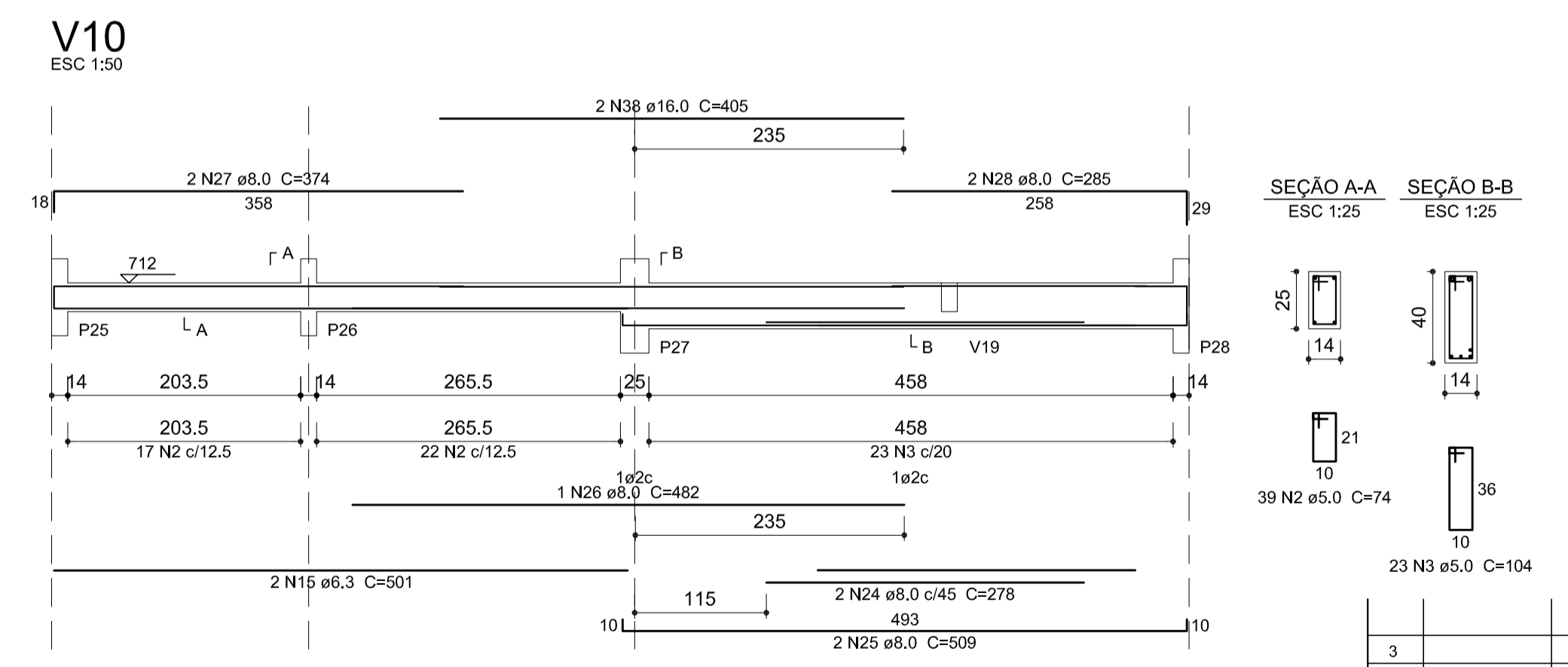
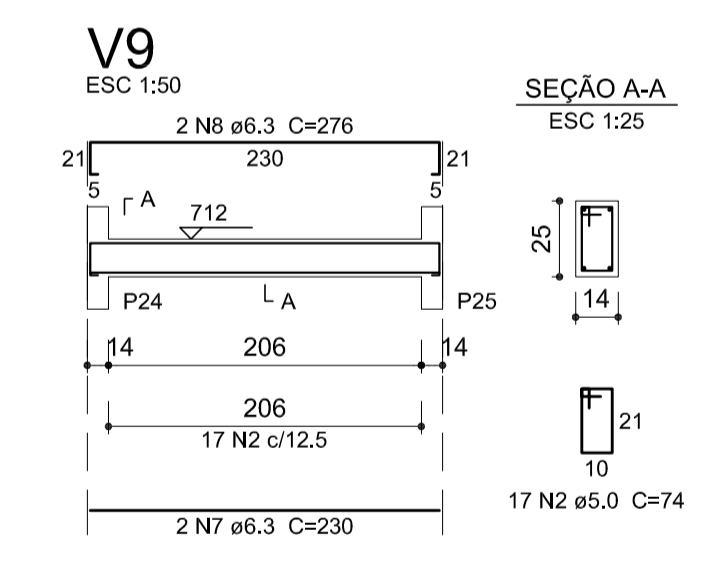
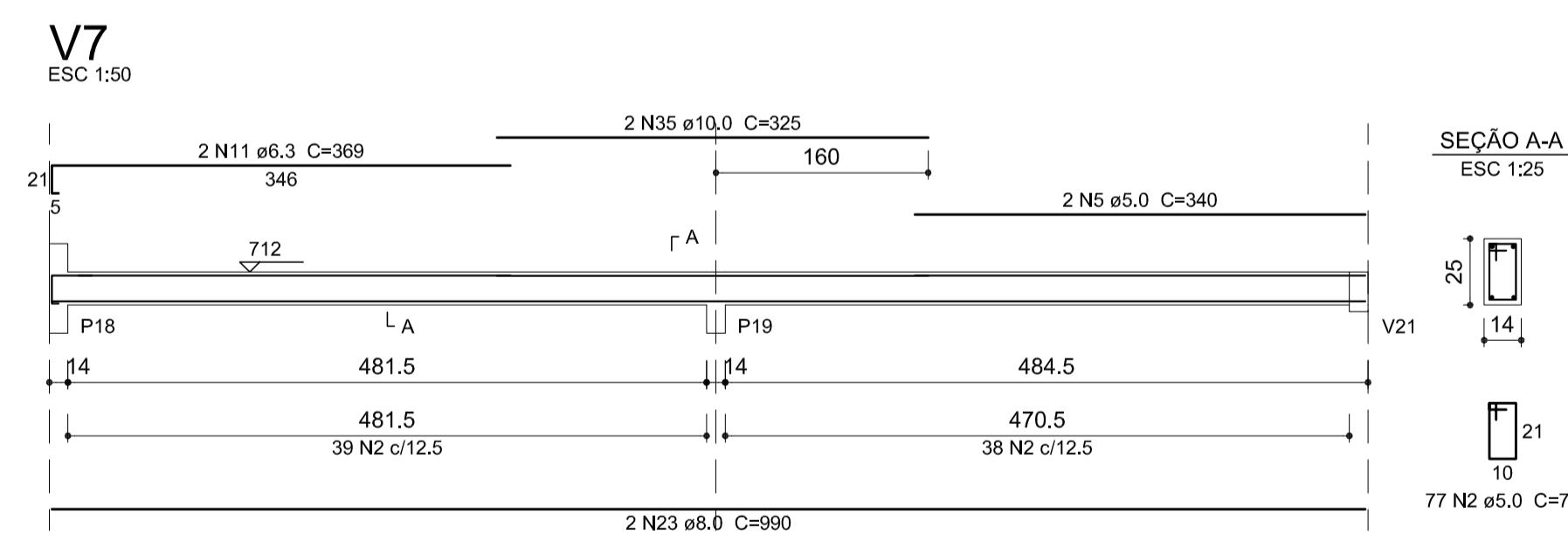
AÇO	N	DIAM (mm)	QUANT	C.UNIT (cm)	C.TOTAL (cm)
CA60	1	5.0	113	84	9492
	2	5.0	285	74	21090
	3	5.0	56	104	5824
	4	5.0	2	320	640
	5	5.0	2	340	680
	6	6.3	2	196	392
CA50	7	6.3	4	230	920
	8	6.3	4	276	1104
	9	6.3	2	322	644
	10	6.3	2	186	372
	11	6.3	4	369	1476
	12	6.3	2	311	622
	13	6.3	1	96	96
	14	6.3	2	353	706
	15	6.3	2	501	1002
	16	8.0	1	234	234
	17	8.0	2	478	956
	18	8.0	1	225	225
	19	8.0	4	513	2052
	20	8.0	1	373	373
	21	8.0	2	681	1362
	22	8.0	2	460	920
	23	8.0	4	990	3960
	24	8.0	2	278	556
	25	8.0	2	509	1018
	26	8.0	1	482	482
	27	8.0	2	374	748
	28	8.0	2	285	570
	29	10.0	2	491	982
	30	10.0	2	168	336
	31	10.0	1	148	148
	32	10.0	2	554	1108
	33	10.0	2	351	702
	34	10.0	2	345	690
	35	10.0	2	325	650
	36	12.5	2	420	840
	37	16.0	2	1047	2094
	38	16.0	2	405	810



Resumo do aço

AÇO	DIAM (mm)	C.TOTAL (m)	PESO + 10% (kg)
CA50	6.3	73.4	19.7
	8.0	134.6	58.4
	10.0	46.2	31.3
	12.5	8.4	8.9
	16.0	29.1	50.4
CA60	5.0	377.3	64
PESO TOTAL (kg)			
CA50		168.8	
CA60		64	

Volume de concreto (C-20) = 2,75 m³
 Área de forma = 48,73 m²



3		
2		
1		
Nº	Data	Versão/Revisão

FERREIRA COSTA
 Engenharia e Consultoria Ltda
 ferreiracostaengenharia@yahoo.com.br

Proprietário: PREFEITURA MUNICIPAL DE PAPAGAIOS
 Projeto: PROJETO ESTRUTURAL
 Ref.: VIGAS - BASE FL.01

Endereço: PRAÇA ALEXANDRE MACIEL nº 86 - SANTO ANTÔNIO - PAPAGAIOS - MG
 Autores: MARLON BATISTA DA COSTA, SIMÔNIA C. FERREIRA COSTA
 Eng. Civil - Saneitarista - CREA 50744/D, Eng. Civil - CREA 177925/D

Data: MAI/2017
 Escala: INDICADA
 Folha: 08