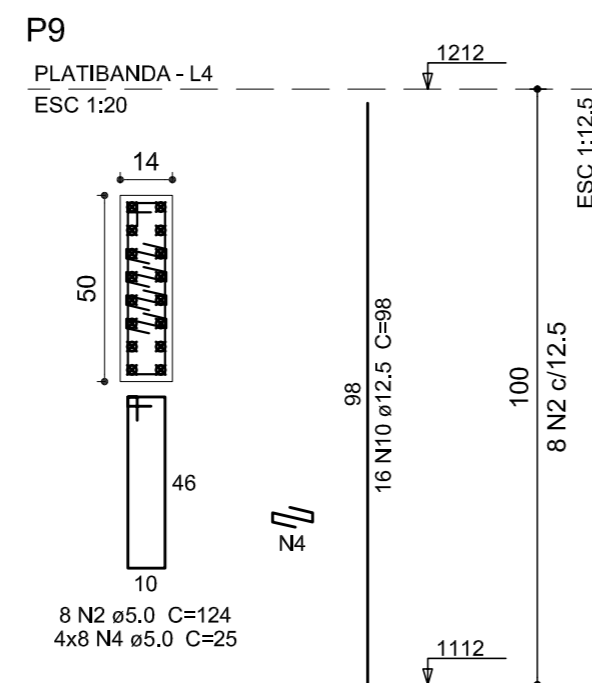
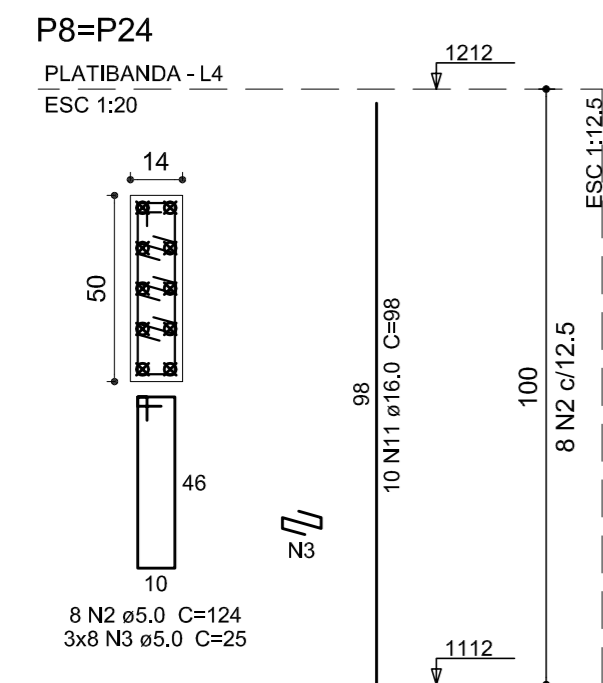
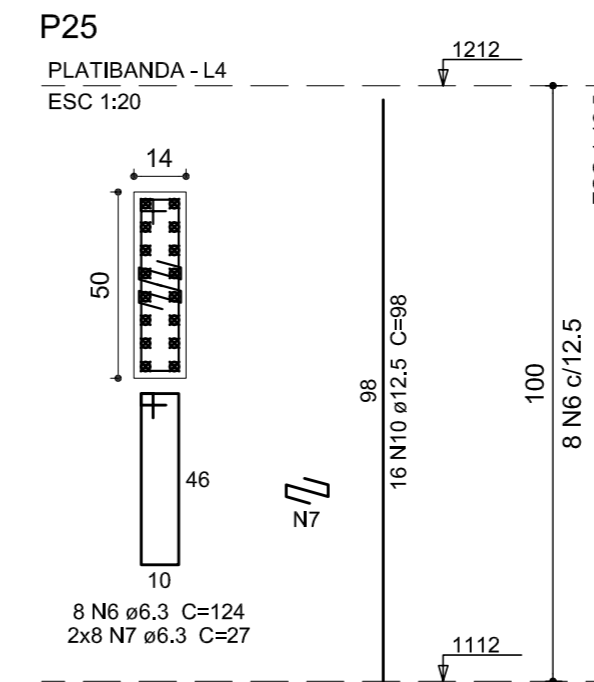
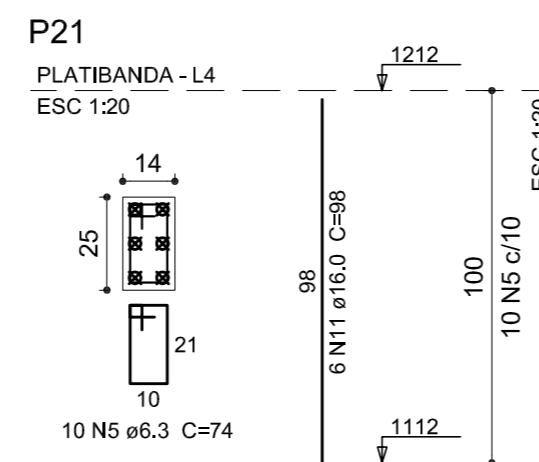
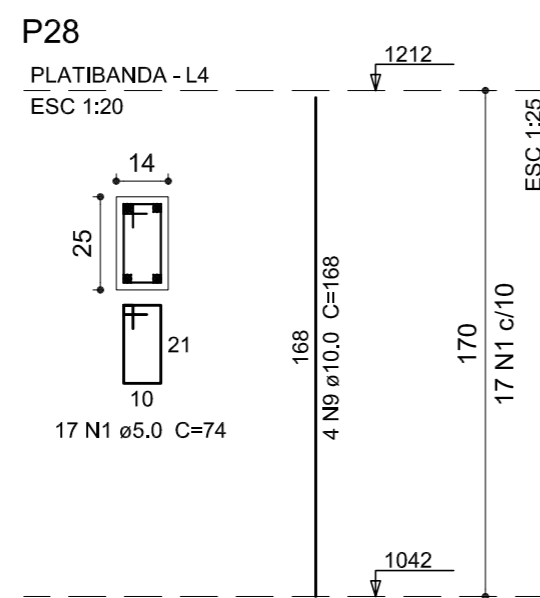
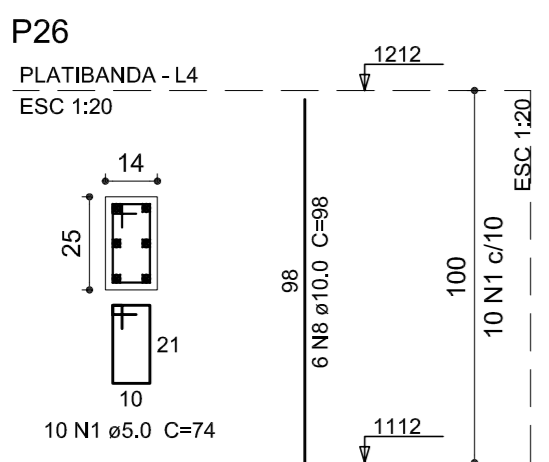
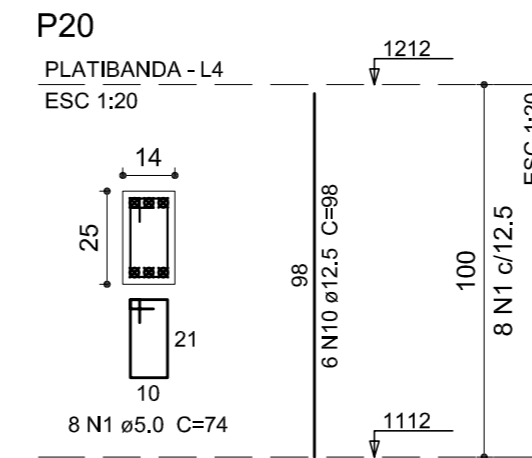
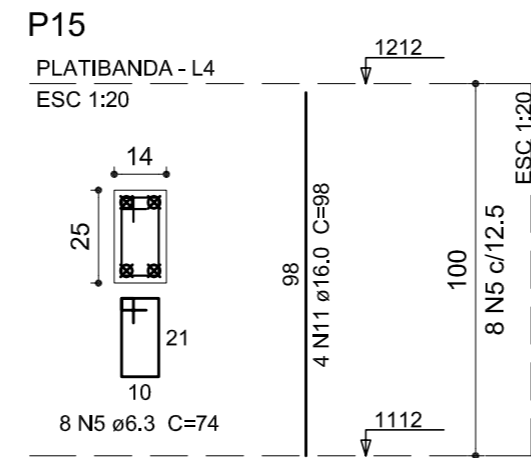
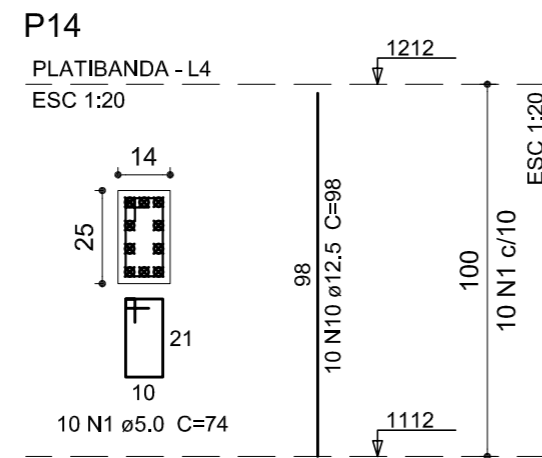
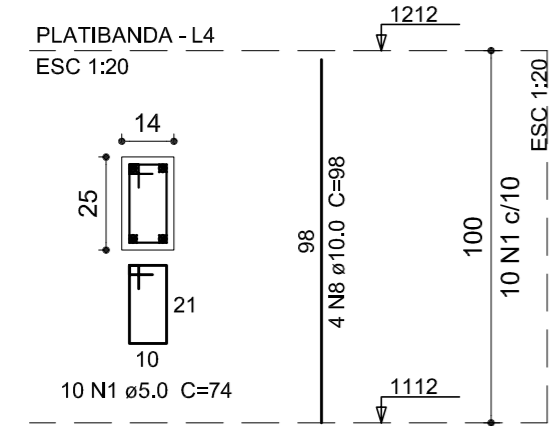


P1=P2=P3=P4=P5=P6=P7=P11=
 =P12=P16=P17=P18=P29=P30=
 =P31=P32=P33=P34=P35=P36



Relação do aço

20xP1	2xP8	P9
P14	P15	P20
P21	P25	P26
P28		

AÇO	N	DIAM (mm)	QUANT	C.UNIT (cm)	C.TOTAL (cm)
CA60	1	5.0	245	74	18130
	2	5.0	24	124	2976
	3	5.0	48	25	1200
	4	5.0	32	25	800
CA50	5	6.3	18	74	1332
	6	6.3	8	124	992
	7	6.3	16	27	432
	8	10.0	86	98	8428
	9	10.0	4	168	672
	10	12.5	48	98	4704
	11	16.0	30	98	2940

Resumo do aço

AÇO	DIAM (mm)	C.TOTAL (m)	PESO + 10 % (kg)
CA50	6.3	27.6	7.4
	10.0	91	61.7
	12.5	47.1	49.8
	16.0	29.4	51
CA60	5.0	231.1	39.2
PESO TOTAL (kg)			
CA50		170	
CA60		39.2	

Volume de concreto (C-20) = 1.21 m³
 Área de forma = 25.95 m²

3		
2		
1		
Nº	Data	Versão/Revisão

FERREIRA COSTA
 Engenharia e Consultoria Ltda
 ferreiracostaengenharia@yahoo.com.br

Proprietário: PREFEITURA MUNICIPAL DE PAPAGAIOS
 Projeto: PROJETO ESTRUTURAL
 Ref.: PILARES - PLATIBANDA
 Endereço: PRAÇA ALEXANDRE MACIEL nº 86 - SANTO ANTÔNIO - PAPAGAIOS - MG
 Autores: MARLON BATISTA DA COSTA (Eng. Civil/Sanitarista - CREA 50744/D) e SIMÔNIA C. FERREIRA COSTA (Eng. Civil - CREA 177925/D)
 Data: MAI/2017
 Escala: INDICADA
 Folha: 13