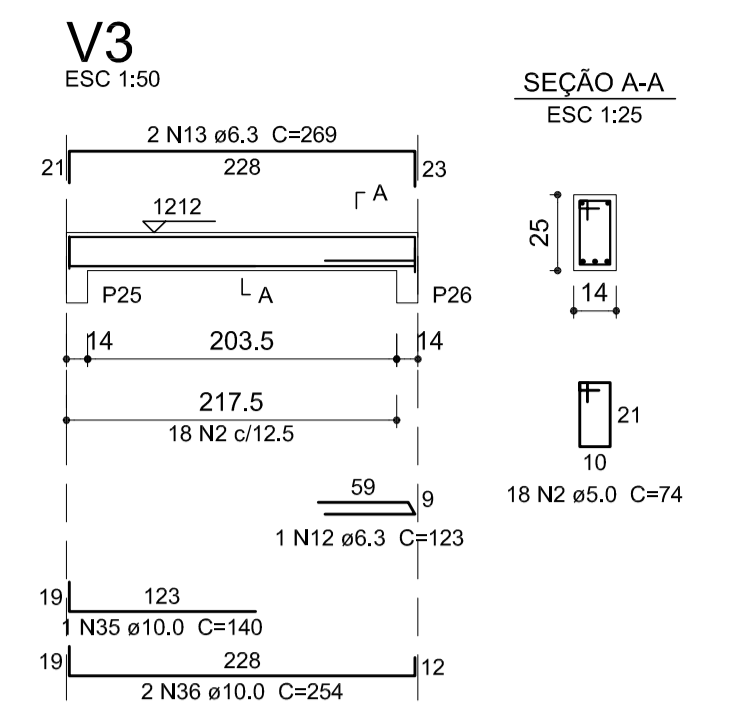
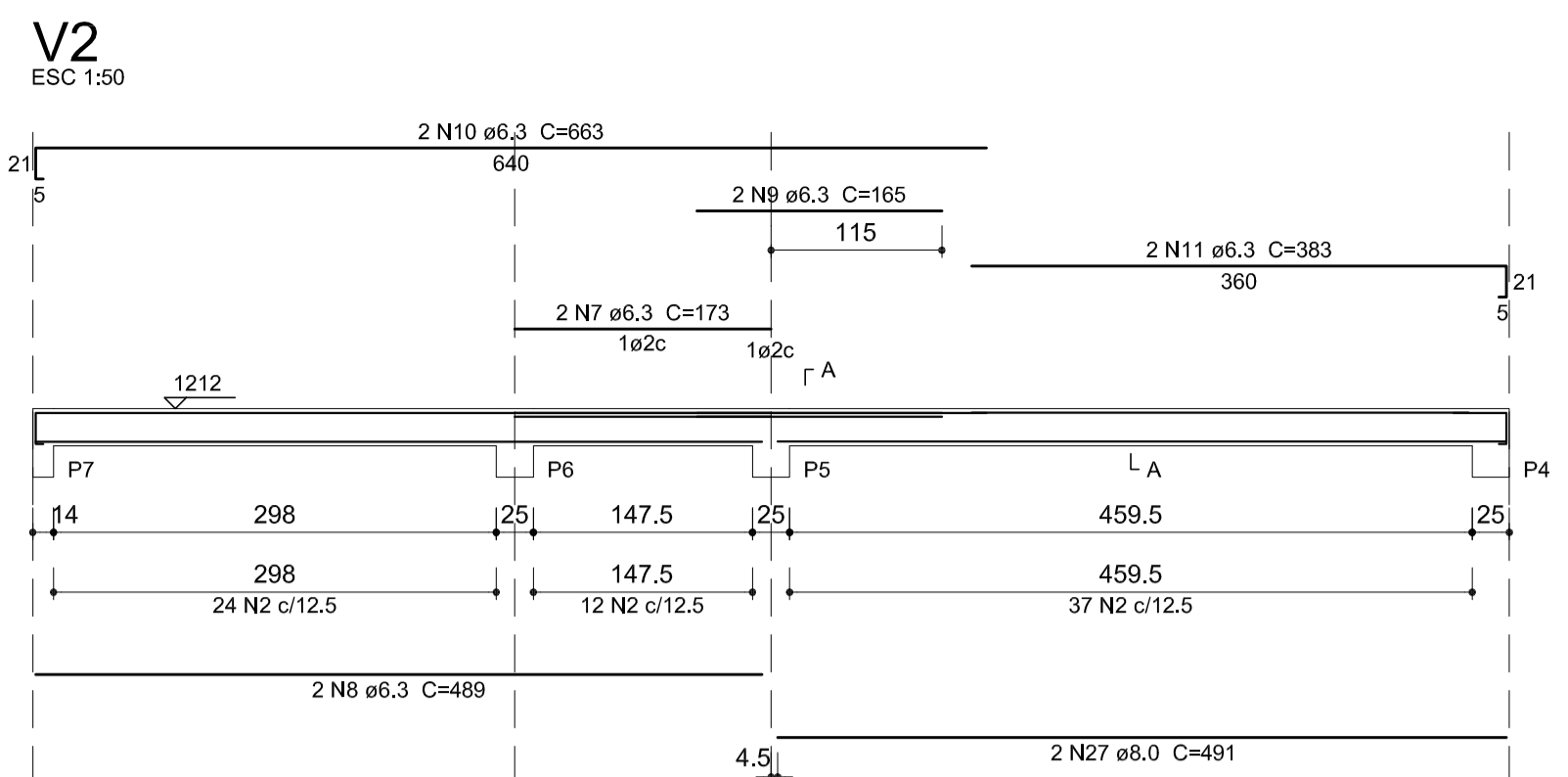
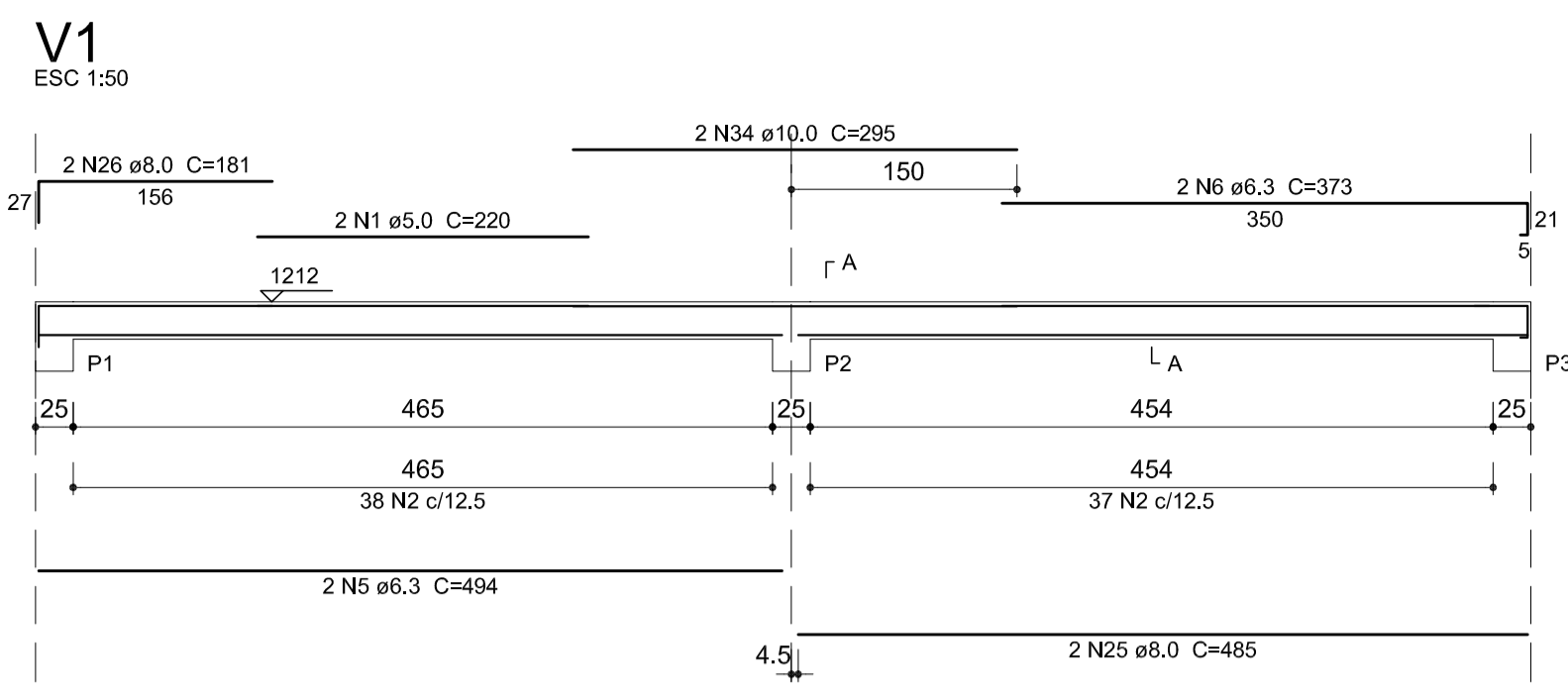
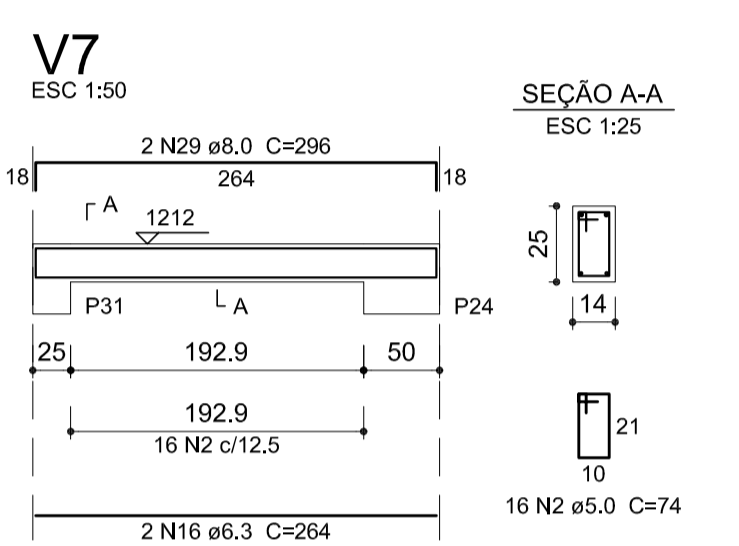
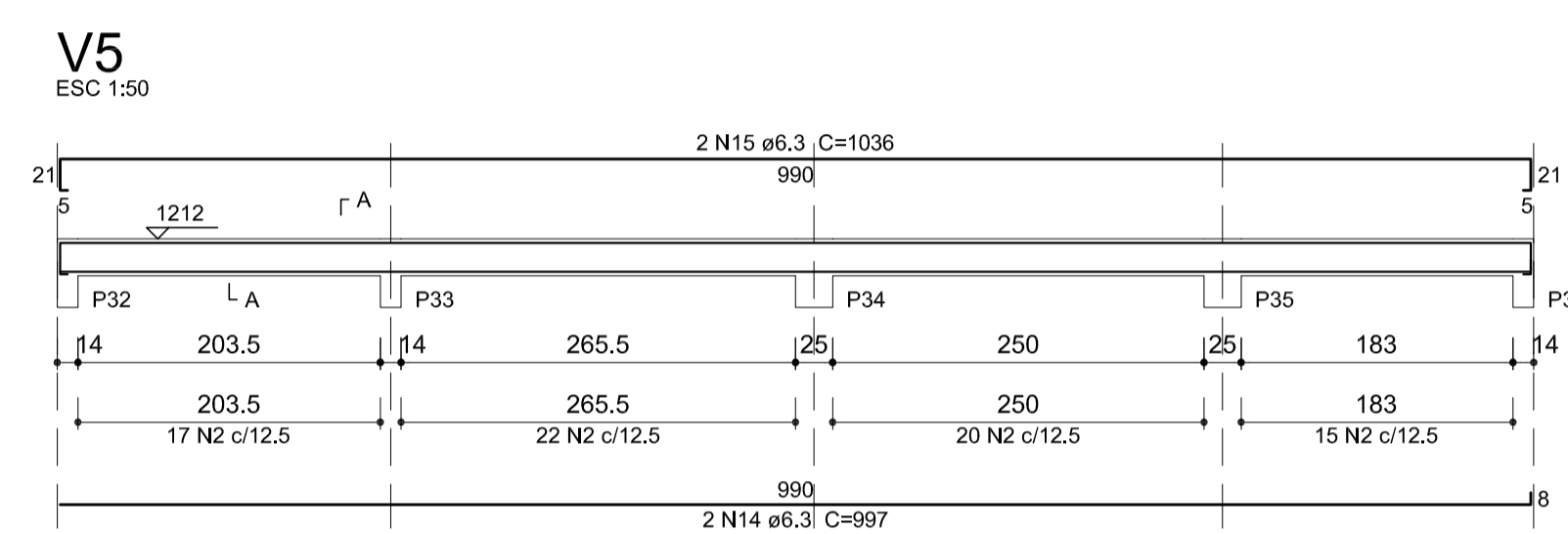
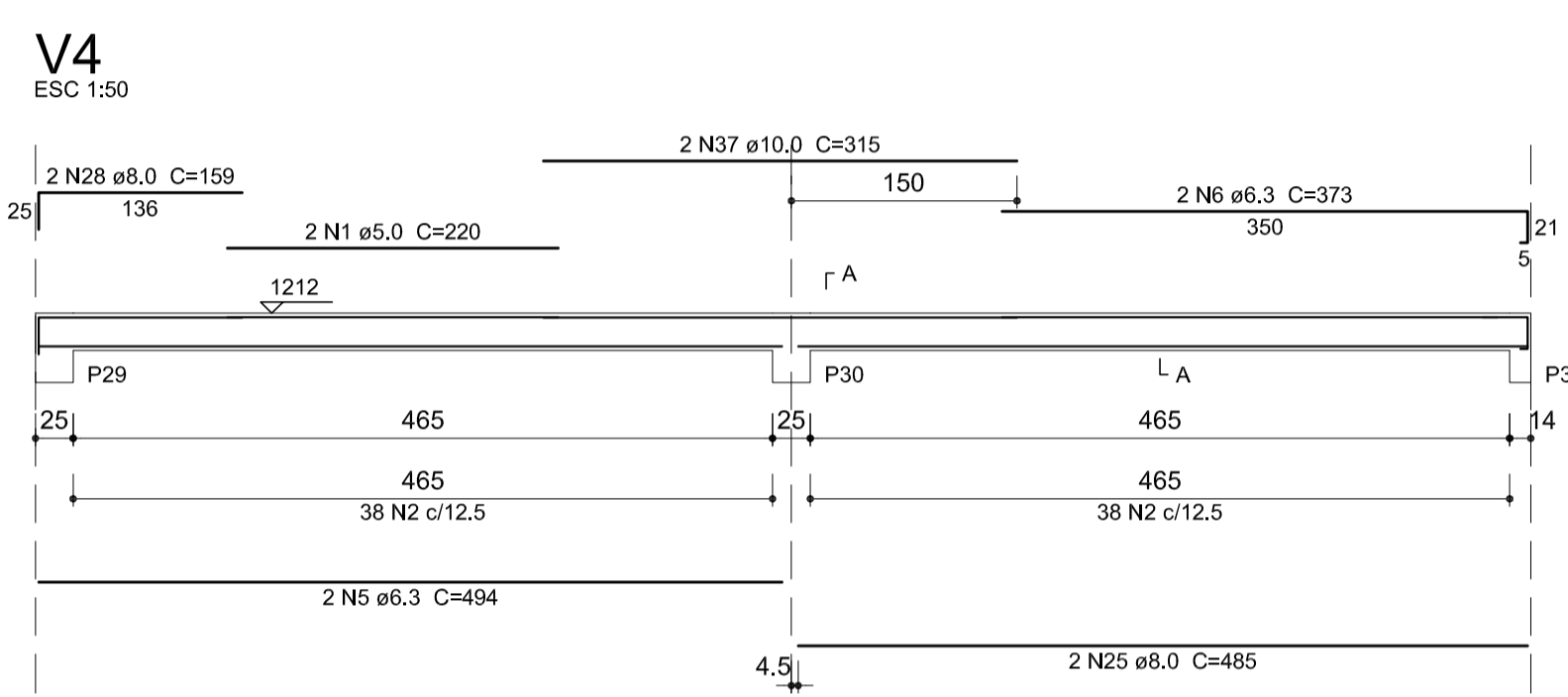


CONFIGURAÇÃO DE PENAS EM PRETO  
 COR PLOTAR NA MESMA COR  
 COR 70% DA COR  
 01 02 03 04 05 06 07 08 09 10 11 12 13 14 15 16 17 18 19 20 21 22 23 24 25 26 27 28 29 30 31 32 33 34 35 36 37 38 39 40 41 42 43 44 45 46 47 48 49 50 51 52 53 54 55 56 57 58 59 60 61 62 63 64 65 66 67 68 69 70 71 72 73 74 75 76 77 78 79 80 81 82 83 84 85 86 87 88 89 90 91 92 93 94 95 96 97 98 99 100



**Relação do aço**

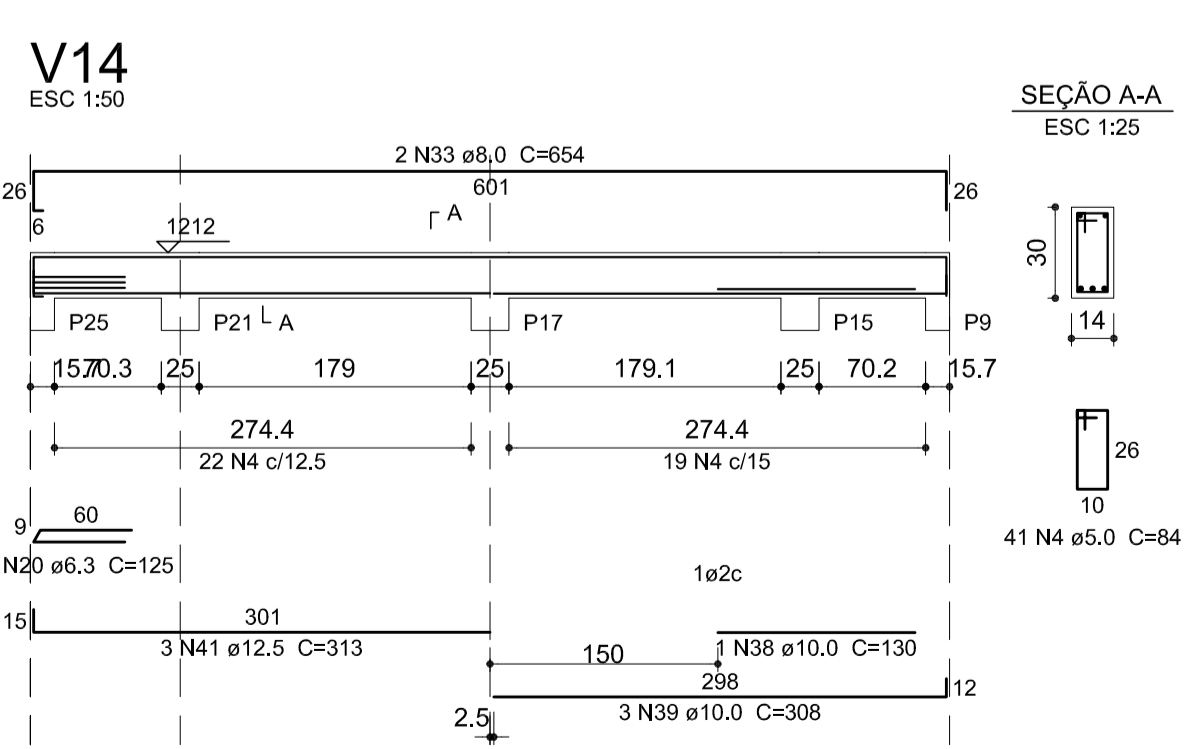
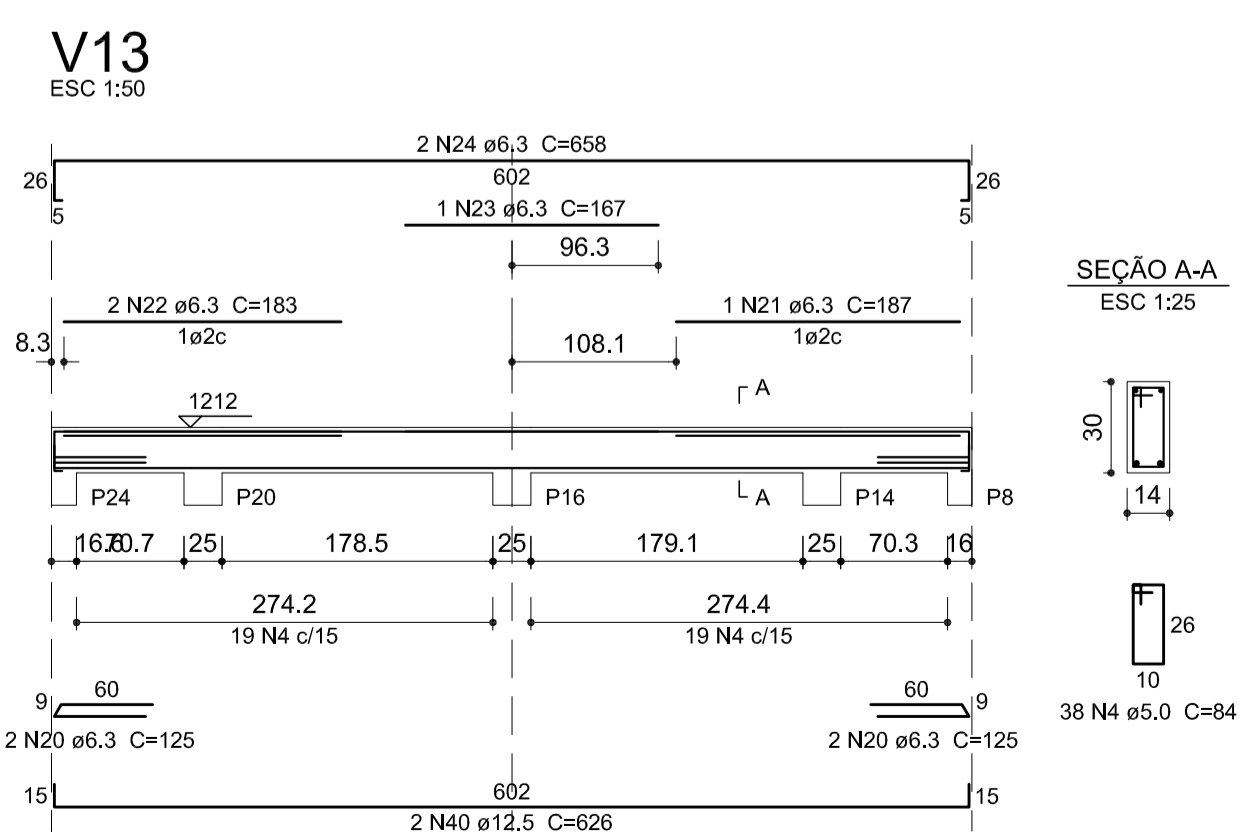
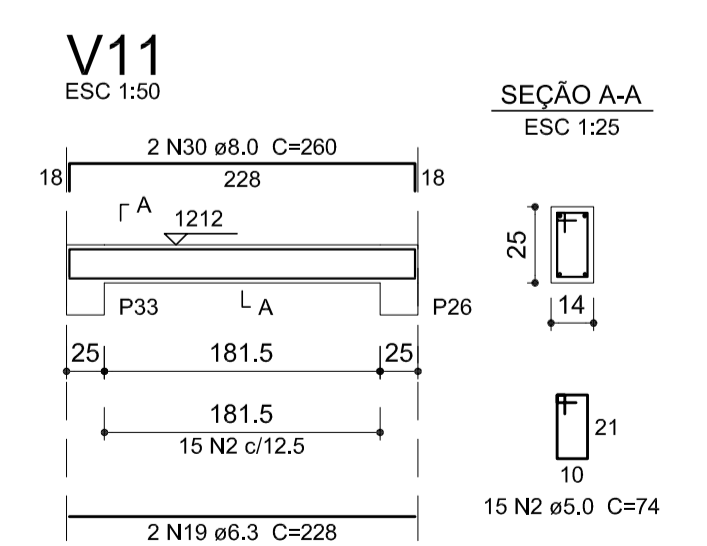
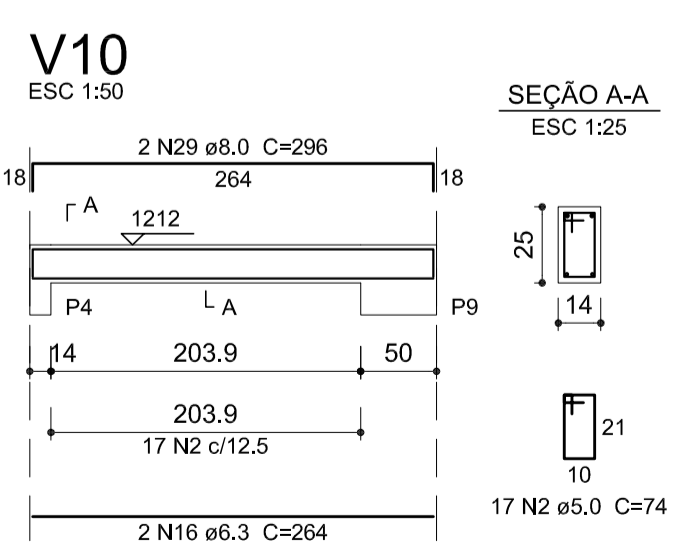
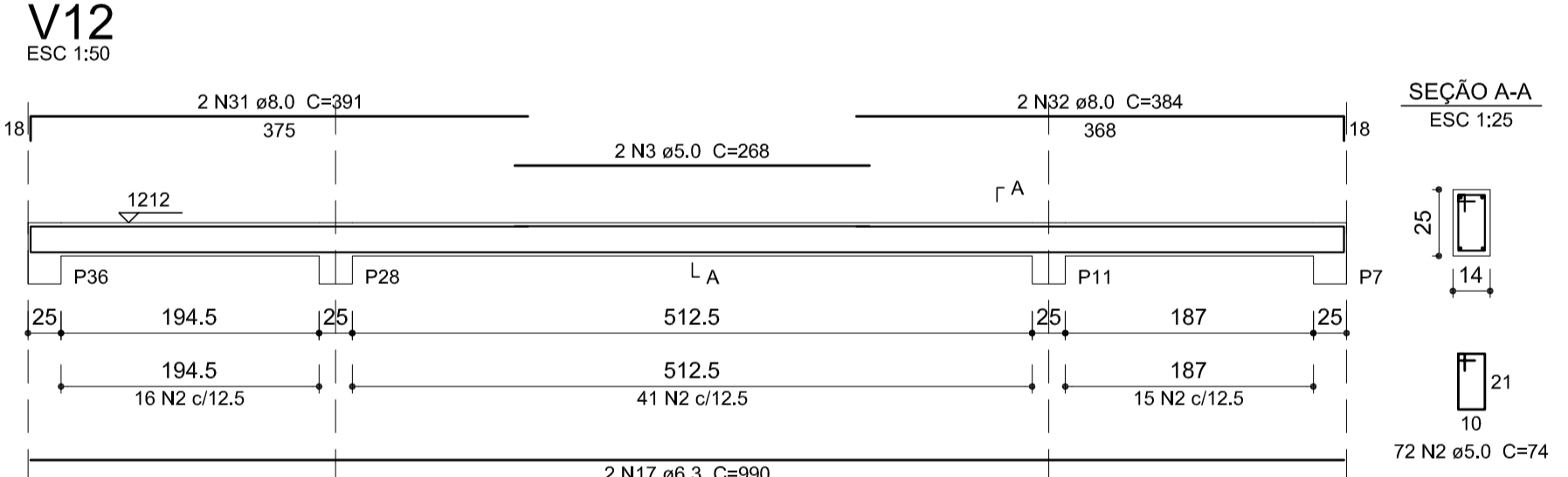
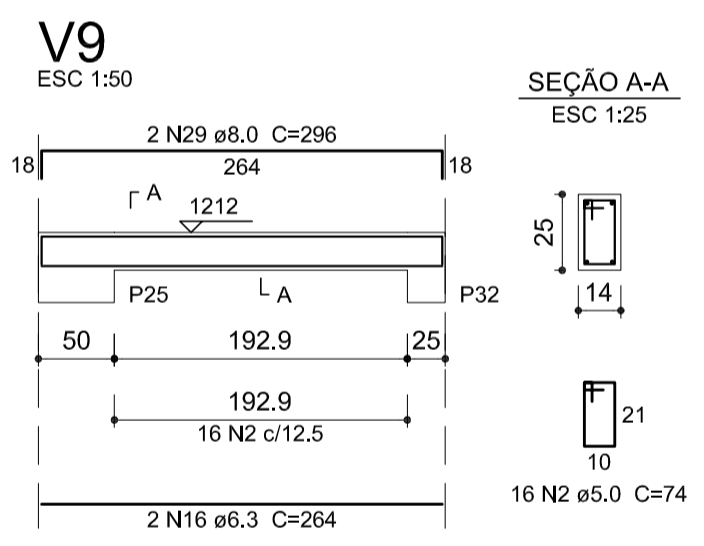
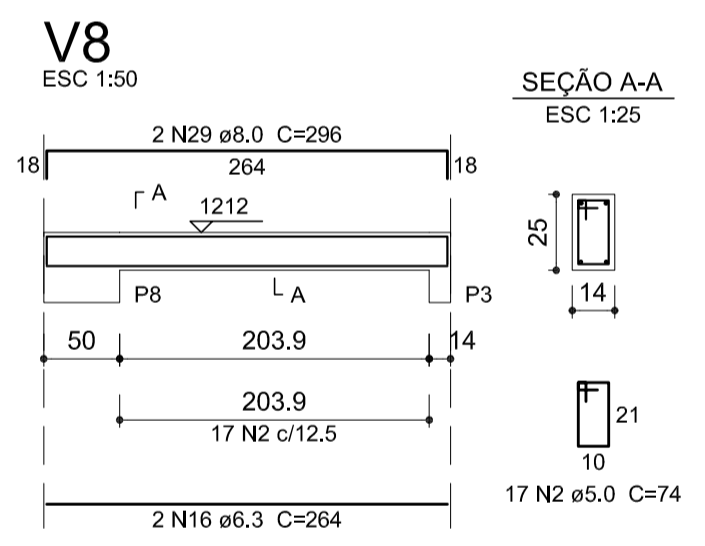
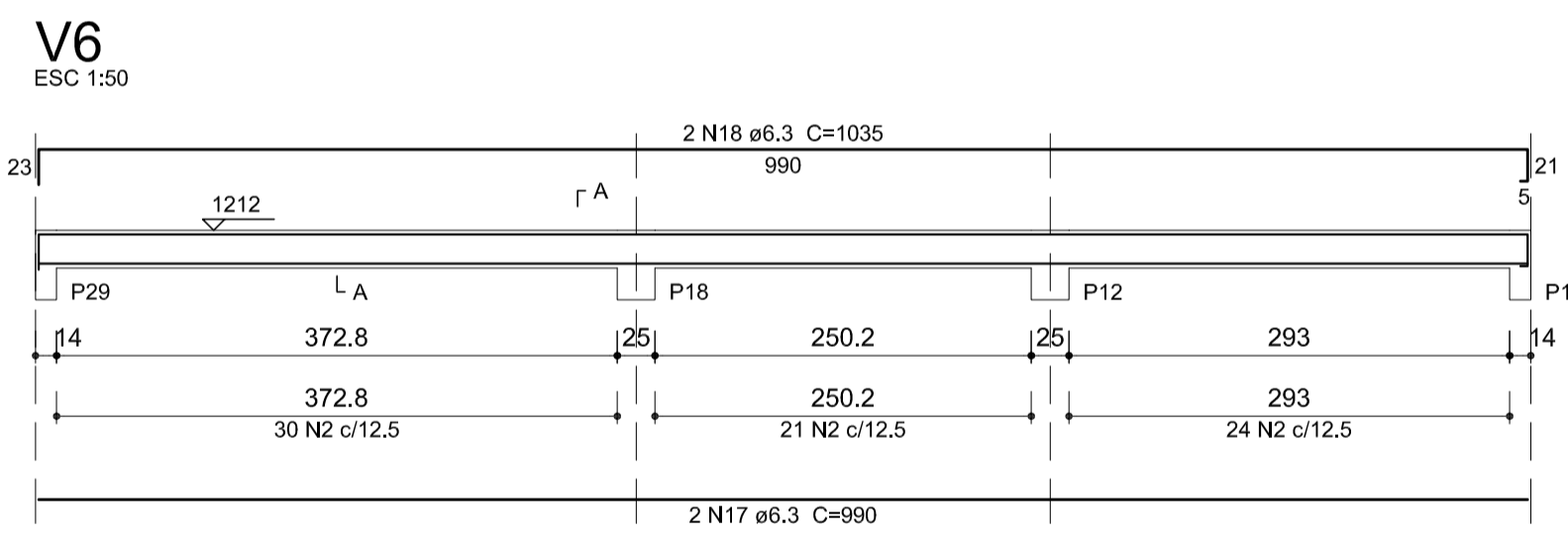
AÇO	N	DIAM (mm)	QUANT	C.UNIT (cm)	C.TOTAL (cm)
CA60	1	5.0	4	220	880
	2	5.0	544	74	40256
	3	5.0	2	268	536
	4	5.0	79	84	6636
CA50	5	6.3	4	494	1976
	6	6.3	4	373	1492
	7	6.3	2	173	346
	8	6.3	2	489	978
	9	6.3	2	165	330
	10	6.3	2	663	1326
	11	6.3	2	383	766
	12	6.3	1	123	123
	13	6.3	2	269	538
	14	6.3	2	997	1994
	15	6.3	2	1036	2072
	16	6.3	8	264	2112
	17	6.3	4	990	3960
	18	6.3	2	1035	2070
	19	6.3	2	228	456
	20	6.3	7	125	875
	21	6.3	1	187	187
	22	6.3	2	183	366
	23	6.3	1	167	167
	24	6.3	2	658	1316
	25	8.0	4	485	1940
	26	8.0	2	181	362
	27	8.0	2	491	982
	28	8.0	2	159	318
	29	8.0	8	296	2368
	30	8.0	2	260	520
	31	8.0	2	391	782
	32	8.0	2	384	768
	33	8.0	2	654	1308
	34	10.0	2	295	590
	35	10.0	1	140	140
	36	10.0	2	254	508
	37	10.0	2	315	630
	38	10.0	1	130	130
	39	10.0	3	308	924
	40	12.5	2	626	1252
	41	12.5	3	313	939



**Resumo do aço**

AÇO	DIAM (mm)	C.TOTAL (m)	PESO + 10% (kg)
CA50	6.3	234.5	63.1
	8.0	93.5	40.6
	10.0	29.3	19.8
	12.5	22	23.2
CA60	5.0	483.1	81.9
<b>PESO TOTAL (kg)</b>			
CA50		146.7	
CA60		81.9	

Volume de concreto (C=20) = 3.13 m³  
Área de forma = 56.95 m²



3	
2	
1	
Nº	Data
	Versão/Revisão

**FERREIRA COSTA**  
Engenharia e Consultoria Ltda  
ferreiracostaengenharia@yahoo.com.br

Proprietário: **PREFEITURA MUNICIPAL DE PAPAGAIOS**

Projeto: **PROJETO ESTRUTURAL**

Ref.: **VIGAS - PLATIBANDA**

Endereço: **PRACA ALEXANDRE MACIEL nº 86 - SANTO ANTÔNIO - PAPAGAIOS - MG**

Autores: **MARLON BATISTA DA COSTA** Eng. Civil - S/21747/D  
**SIMÔNIA C. FERREIRA COSTA** Eng. Civil - CREA 177925/D

Data: **MAI/2017**

Escala: **INDICADA**

Folha: **14**