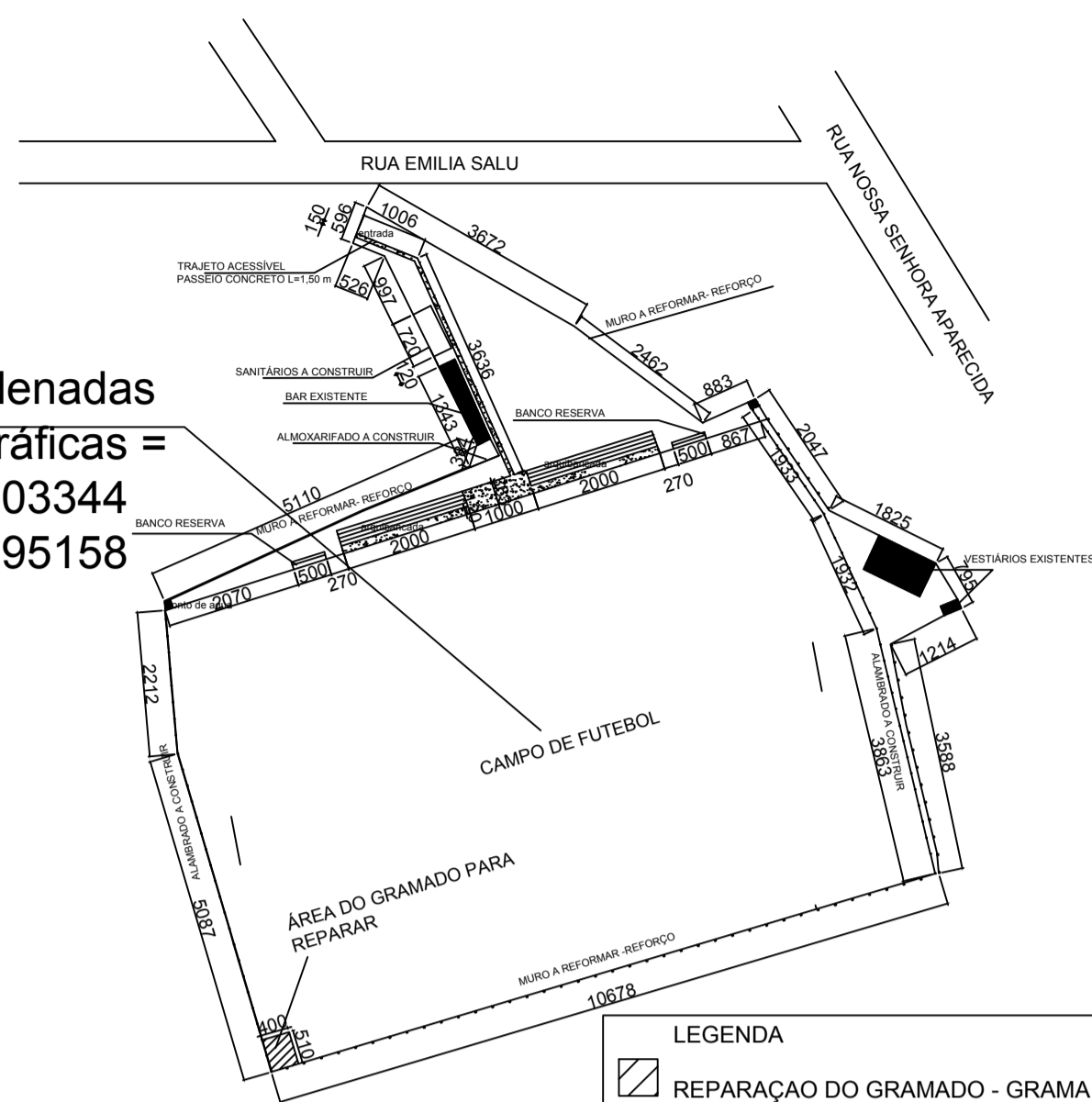
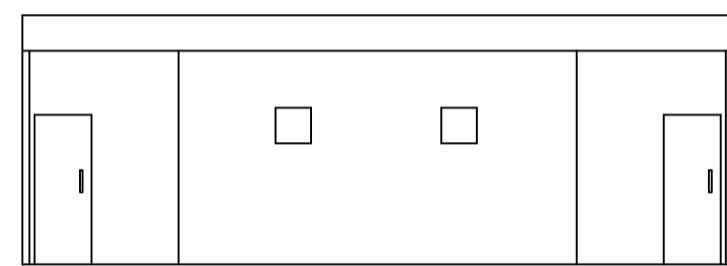
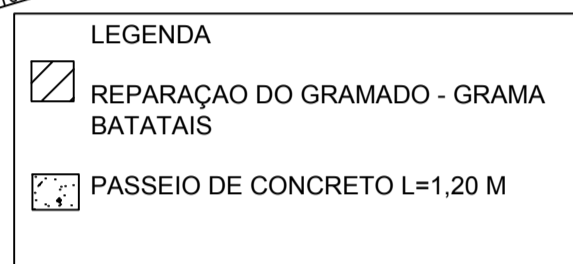


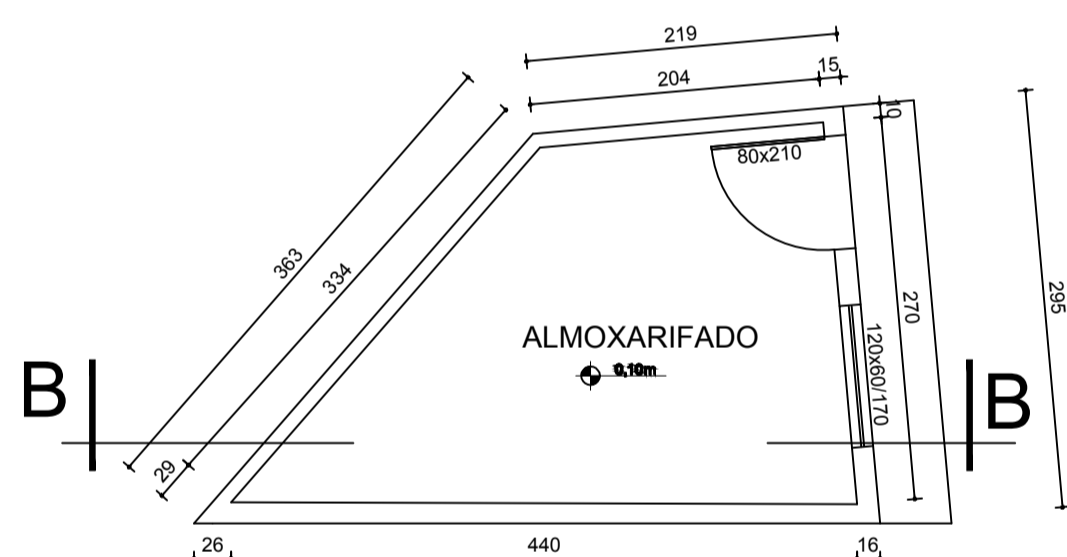
Coordenadas Geográficas =  
-19,503344  
-44,795158



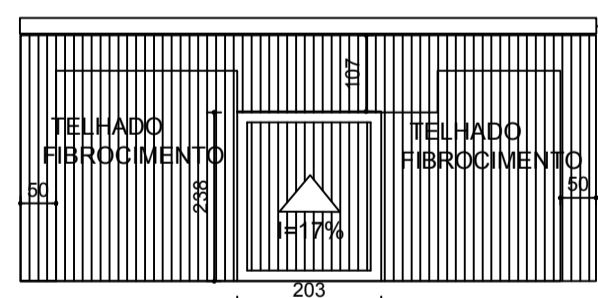
PLANTA BAIXA -GERAL  
ESCALA 1:1000



FACHADA FRONTAL - VESTIÁRIOS EXISTENTES  
ESCALA 1:100

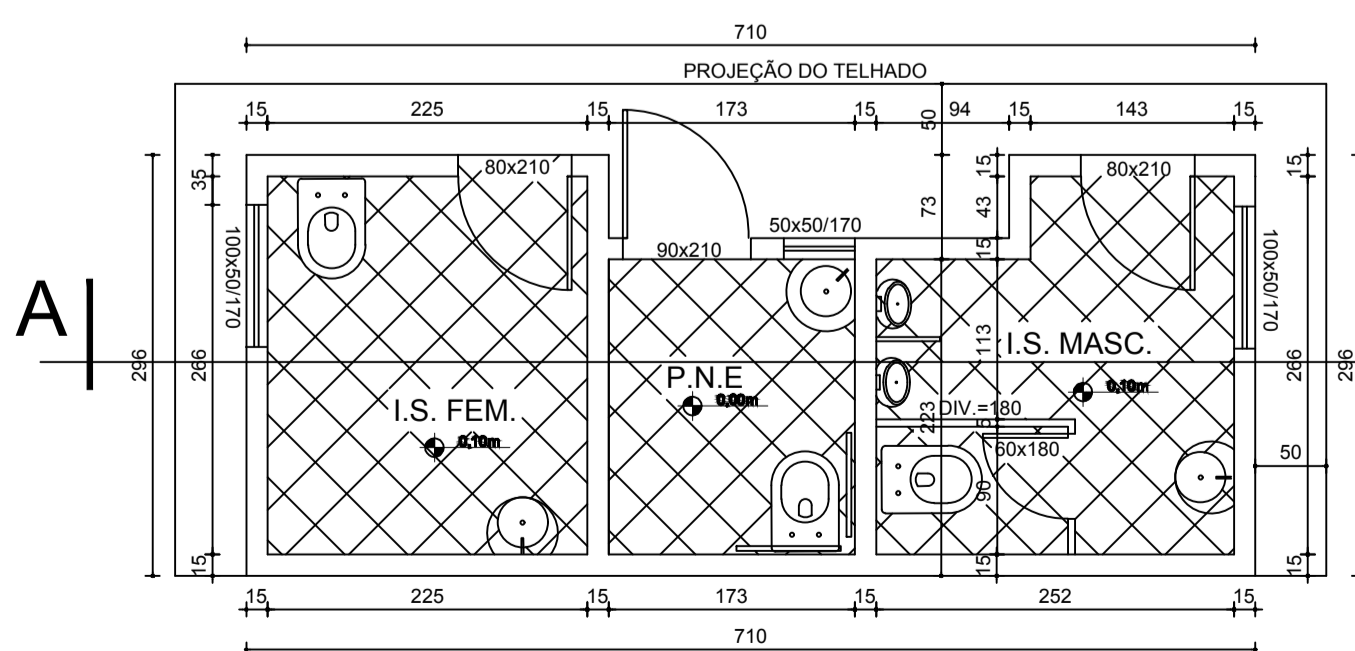


PLANTA BAIXA ALMOXARIFADO  
ESCALA 1:50

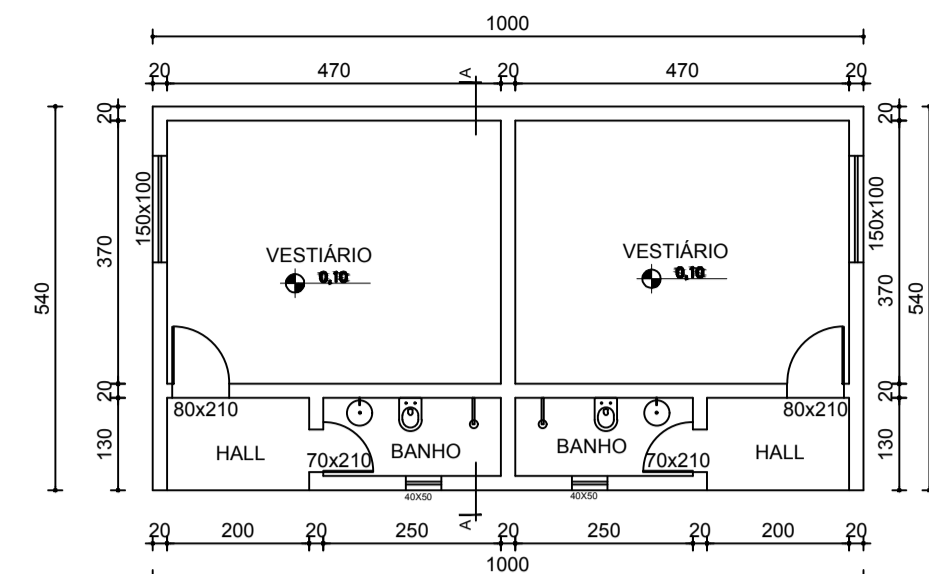


PLANTA DE COBERTURA  
ESCALA 1:100

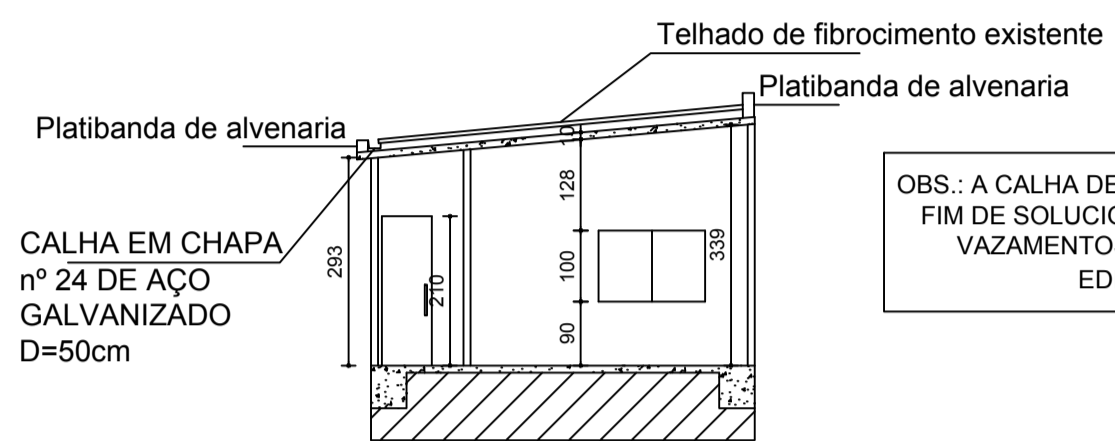
CALHA EM CHAPA nº 24 DE AÇO GALVANIZADO D=50cm



PLANTA BAIXA SANITÁRIOS  
ESCALA 1:50

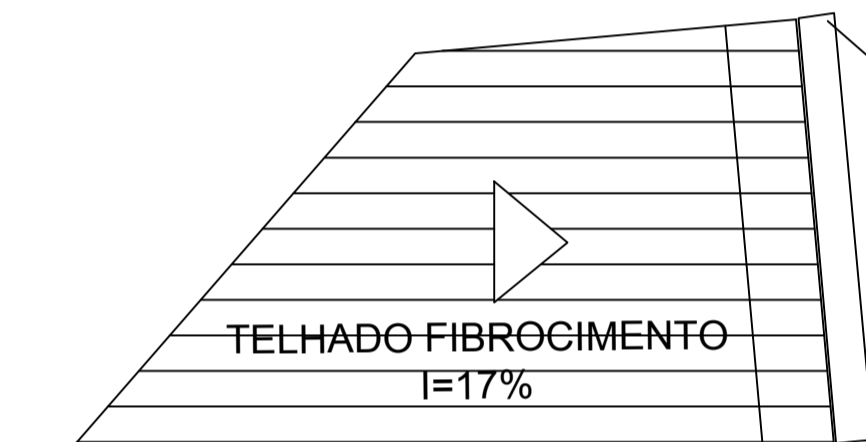


PLANTA BAIXA VESTIÁRIOS EXISTENTES  
ESCALA 1:100

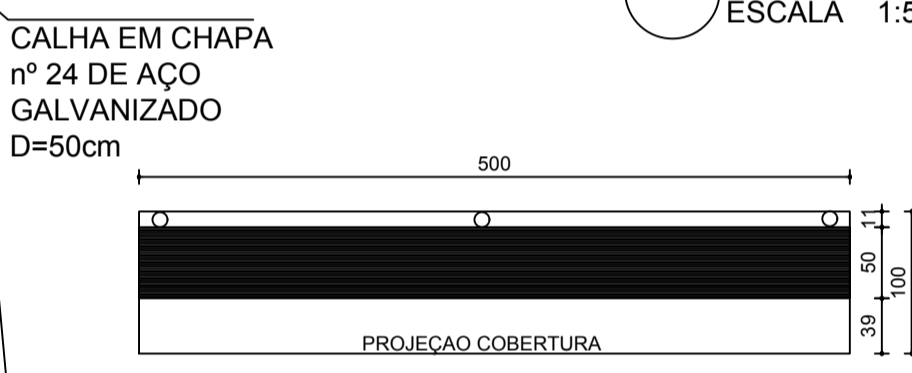


CORTE AA - VESTIÁRIOS EXISTENTES  
ESCALA 1:100

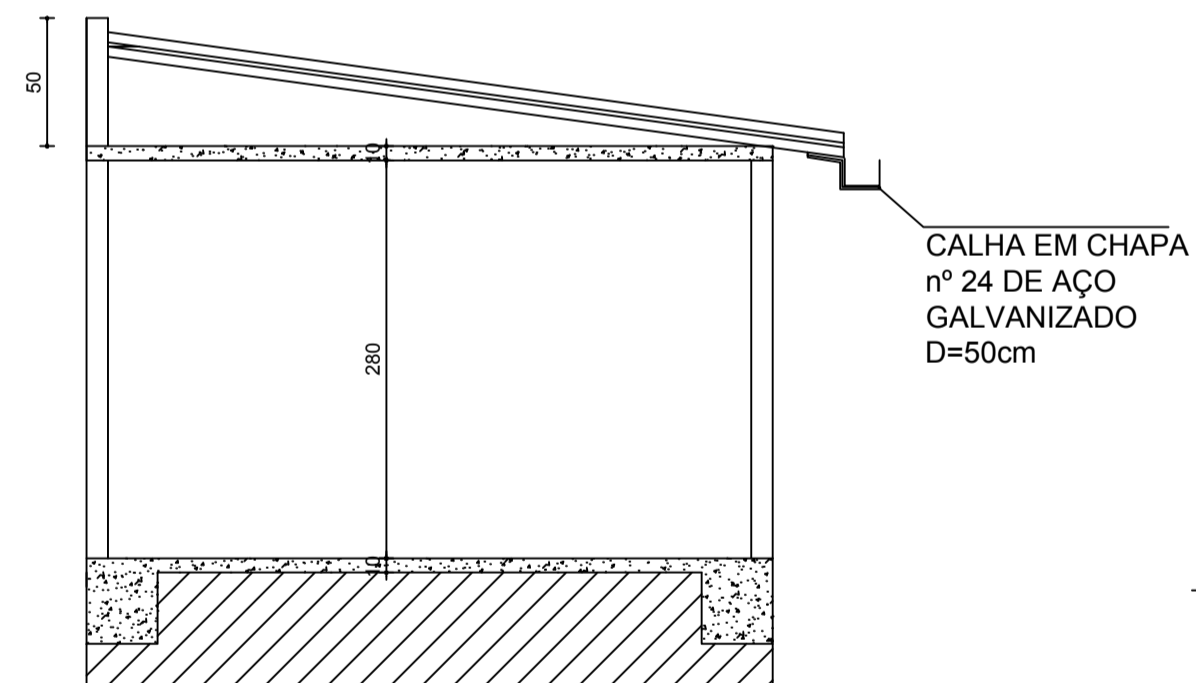
OBS: A CALHA DEVERÁ SER INSTALADA A FIM DE SOLUCIONAR O PROBLEMA DE VAZAMENTOS NESTE PONTO DA EDIFICAÇÃO.



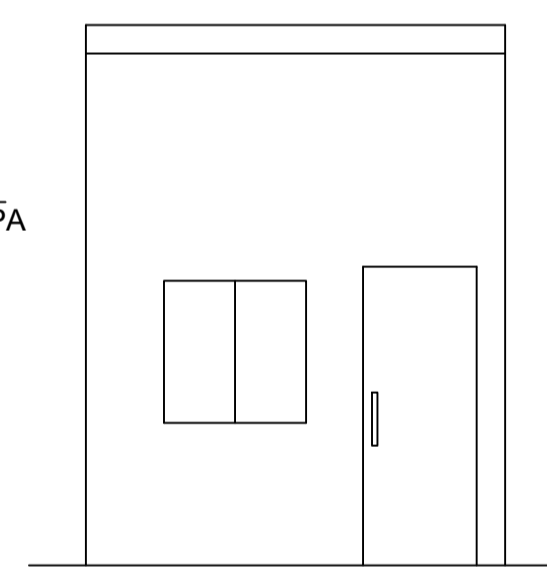
PLANTA DE COBERTURA  
ESCALA 1:50



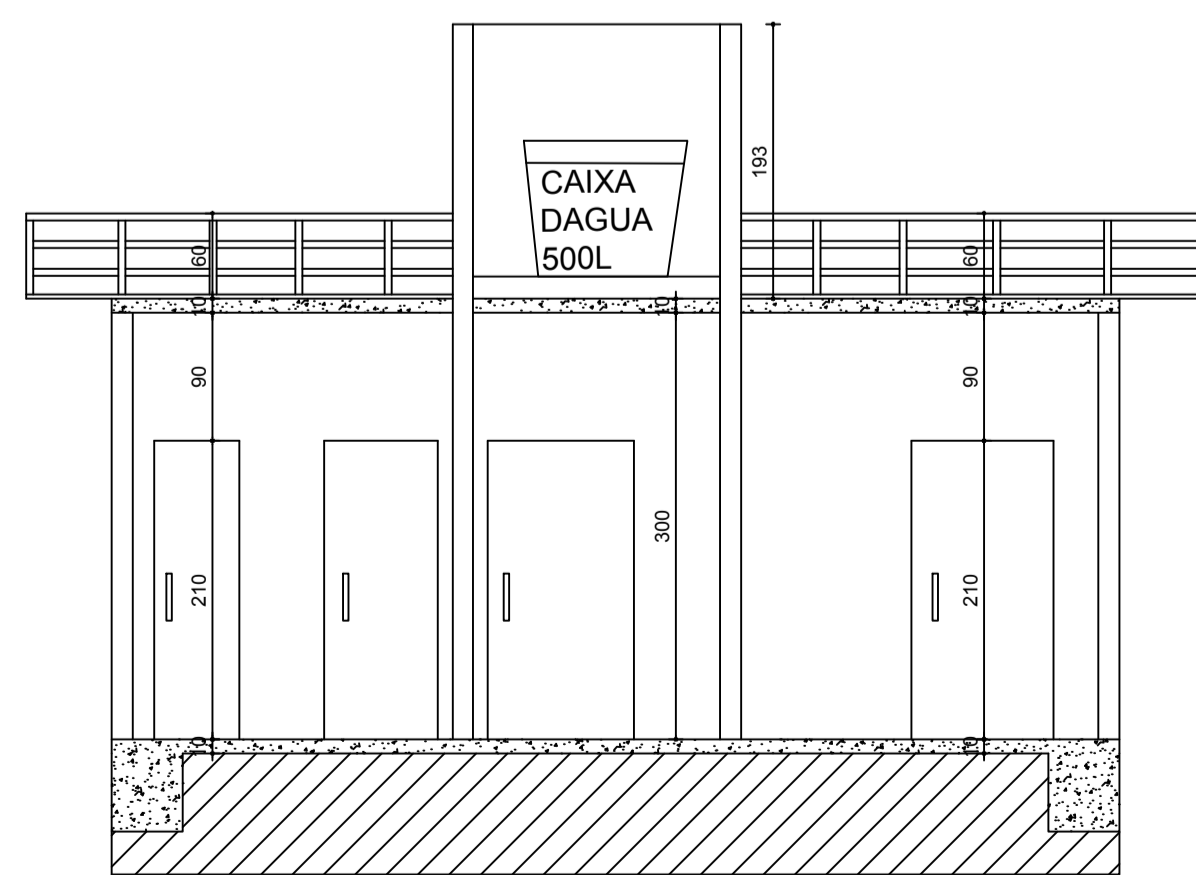
PLANTA BAIXA BANCO DE RESERVAS  
ESCALA 1:50



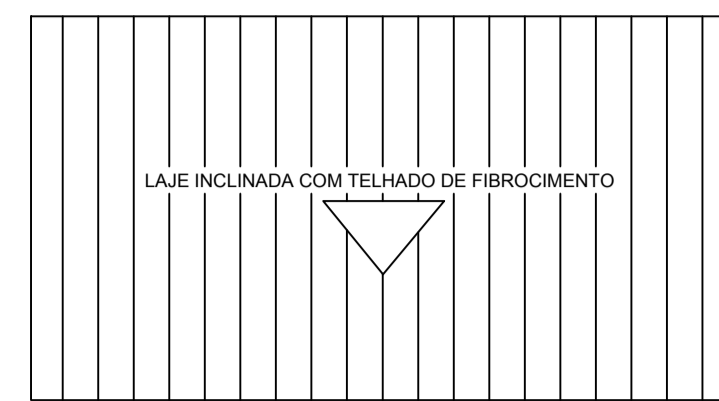
CORTE BB - ALMOXARIFADO  
ESCALA 1:50



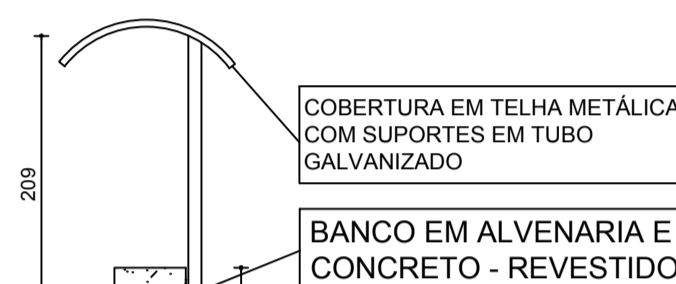
FACHADA FRONTAL  
ESCALA 1:50



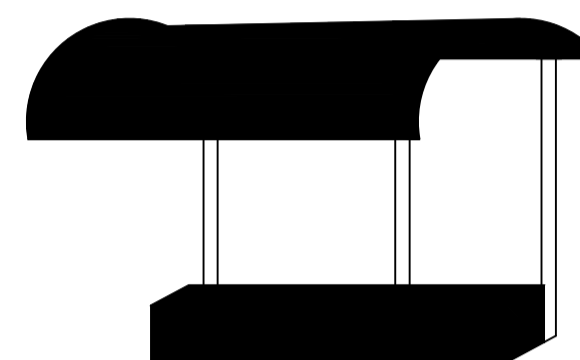
CORTE AA - SANITÁRIOS  
ESCALA 1:50



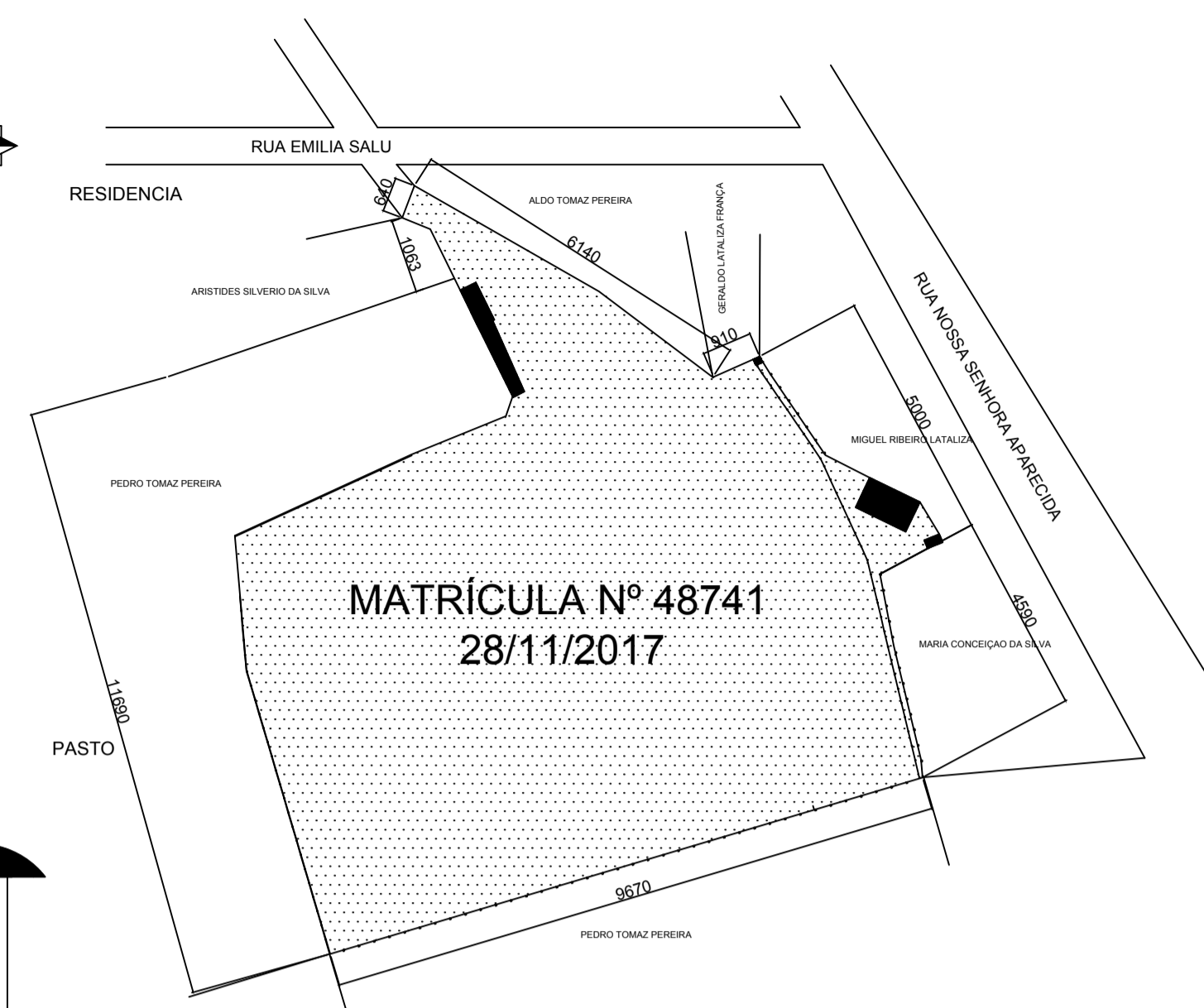
PLANTA DE COBERTURA  
ESCALA 1:100



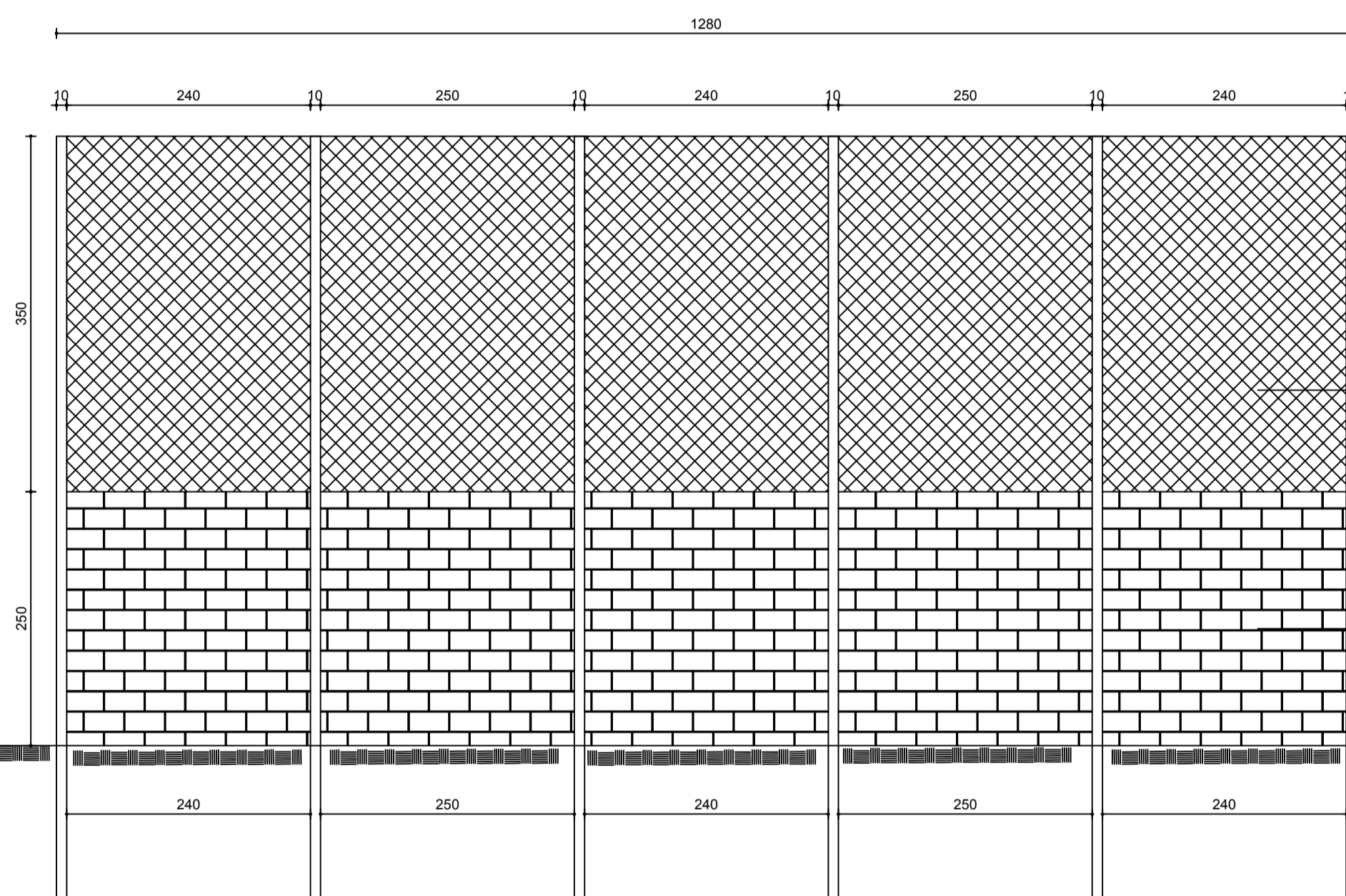
ELEVÇÃO  
ESCALA 1:50



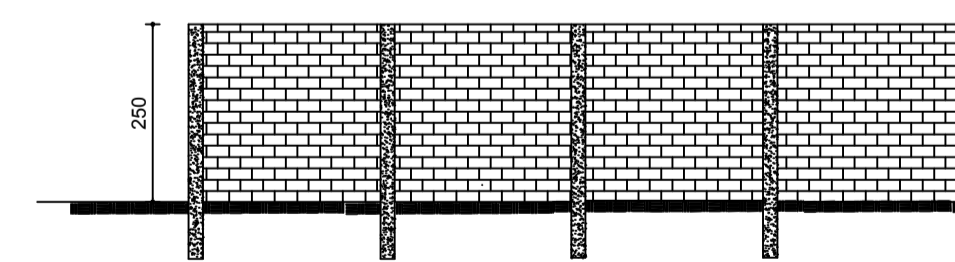
PERSPECTIVA - BANCO DE RESERVAS  
ESCALA 1:100



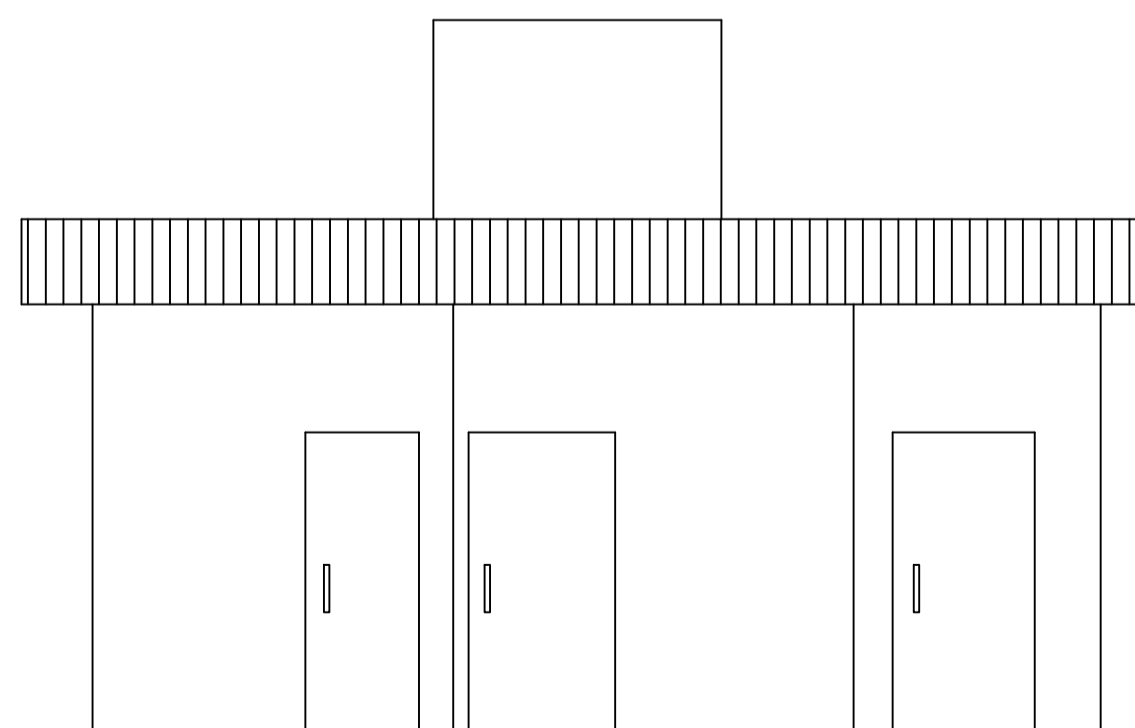
PLANTA DE SITUAÇÃO - MATRÍCULA  
ESCALA 1:1000



ELEVÇÃO ALAMBRADO  
ESCALA 1:100



ELEVÇÃO MURO - REFORÇO  
ESCALA 1:100



FACHADA FRONTAL - SANITÁRIOS  
ESCALA 1:50

INSTITUIÇÃO			
PREFEITURA MUNICIPAL DE PAPAGAIOS			
OBRA			
REVITALIZAÇÃO CAMPO DE FUTEBOL - RECANTO DO SABIÁ			
PROJETO ARQUITETÔNICO			
ENDEREÇO		LOCALIDADE	
RUA EMILIA SALU 49 VARGEM GRANDE PAPAGAIOS		PAPAGAIOS/MG	
RESPONSABILIDADE TÉCNICA		RESPONSÁVEL PELO USO:	
ENGENHEIRO CIVIL		PREFEITURA MUNICIPAL DE PAPAGAIOS CNPJ: 18.313.858/0001-18	
CONTEÚDO		ÁREA DO TERRENO	DATA
PLANTA BAIXA, PLANTA SITUAÇÃO, CORTES, COBERTURA - SANITÁRIOS, VESTIÁRIOS EXISTENTES E BANCO RESERVAS		8928,778 m²	12/06/2018
		À CONSTRUIR:	FORMATO
		134,00 m²	A-1
		FOLHA	01/02